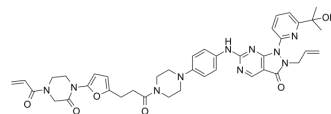


## LEB-03-153

|                    |   |
|--------------------|---|
| Cat. No.:          | HY-143343   |
| Molecular Formula: | C <sub>40</sub> H <sub>44</sub> N <sub>10</sub> O <sub>6</sub>                            |
| Molecular Weight:  | 760.84  |
| Target:            | Wee1  |
| Pathway:           | Cell Cycle/DNA Damage   |
| Storage:           | Please store the product under the recommended conditions in the Certificate of Analysis. |



## BIOLOGICAL ACTIVITY

### Description

LEB-03-153 is a WEE1 DUBTAC (deubiquitinase-targeting chimera) linking AZD1775 (Adavosertib) to the OTUB1 recruiter EN523 through no linker<sup>[1]</sup>.

## REFERENCES

[1]. Henning NJ, et al. Deubiquitinase-targeting chimeras for targeted protein stabilization. Nat Chem Biol. 2022 Apr;18(4):412-421.

**Caution: Product has not been fully validated for medical applications. For research use only.**

Tel: 609-228-6898

Fax: 609-228-5909

E-mail: tech@MedChemExpress.com

Address: 1 Deer Park Dr, Suite Q, Monmouth Junction, NJ 08852, USA