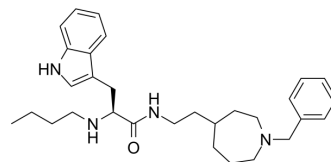


## BChE-IN-5

Cat. No.:	HY-143465
CAS No.:	2983586-25-8
Molecular Formula:	C <sub>30</sub> H <sub>42</sub> N <sub>4</sub> O
Molecular Weight:	474.68
Target:	Cholinesterase (ChE)
Pathway:	Neuronal Signaling
Storage:	Please store the product under the recommended conditions in the Certificate of Analysis.



### BIOLOGICAL ACTIVITY

Description	BChE-IN-5 is a potent and selective BChE inhibitor of hBChE over hAChE with an IC <sub>50</sub> of 2.8 nM for BChE. BChE-IN-5 has the potential for the research of alzheimer's disease <sup>[1]</sup> .	
IC <sub>50</sub> & Target	AChE	BChE
In Vitro	BChE-IN-5 (compound 18) shows inhibitory potencies for hBChE and hAChE with IC <sub>50</sub> s of 2.8 nM, 16000 nM, respectively <sup>[1]</sup> . MCE has not independently confirmed the accuracy of these methods. They are for reference only.	

### REFERENCES

[1]. Meden A, et al. Structure-activity relationship study of tryptophan-based butyrylcholinesterase inhibitors. Eur J Med Chem. 2020 Dec 15;208:112766.

**Caution: Product has not been fully validated for medical applications. For research use only.**

Tel: 609-228-6898

Fax: 609-228-5909

E-mail: tech@MedChemExpress.com

Address: 1 Deer Park Dr, Suite Q, Monmouth Junction, NJ 08852, USA