

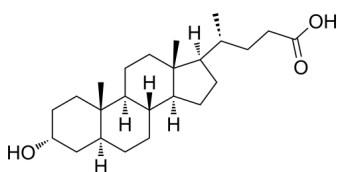
## Allolithocholic acid

Cat. No.: HY-143712  
Batch No.: 294263  
CAS No.: 2276-94-0  
Molecular Formula: C<sub>24</sub>H<sub>40</sub>O<sub>3</sub>

### ANALYTICAL DATA

Theoretical: C(76.55%), H(10.71%), N(-)  
Result: C(75.79%), H(11.00%), N(0.21%)

Chemical Structure:



Caution: Product has not been fully validated for medical applications. For research use only.

Tel: 609-228-6898

Fax: 609-228-5909

E-mail: [tech@MedChemExpress.com](mailto:tech@MedChemExpress.com)

Address: 1 Deer Park Dr, Suite Q, Monmouth Junction, NJ 08852, USA