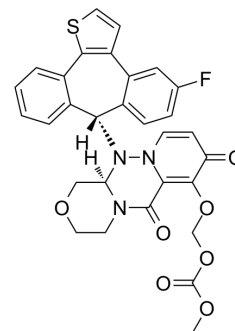


## Cap-dependent endonuclease-IN-2

Cat. No.:	HY-143743
CAS No.:	2303917-78-2
Molecular Formula:	C <sub>30</sub> H <sub>24</sub> FN <sub>3</sub> O <sub>7</sub> S
Molecular Weight:	589.59
Target:	Influenza Virus
Pathway:	Anti-infection
Storage:	Please store the product under the recommended conditions in the Certificate of Analysis.



### BIOLOGICAL ACTIVITY

#### Description

Cap-dependent endonuclease-IN-2 is a potent inhibitor of cap-dependent endonuclease (CEN). Not only can Cap-dependent endonuclease-IN-2 inhibit influenza virus well, but also has lower cytotoxicity, better in vivo agent kinetic properties and in vivo pharmacodynamic properties. Cap-dependent endonuclease-IN-2 has strong inhibitory effect on RNA polymerase activity of A virus (extracted from patent WO2019052565A1, compound 28)<sup>[1]</sup>.

### REFERENCES

[1]. Changhua Tang, et al. Influenza virus replication inhibitors and their uses. Patent WO2019052565A1.

**Caution: Product has not been fully validated for medical applications. For research use only.**

Tel: 609-228-6898

Fax: 609-228-5909

E-mail: tech@MedChemExpress.com

Address: 1 Deer Park Dr, Suite Q, Monmouth Junction, NJ 08852, USA