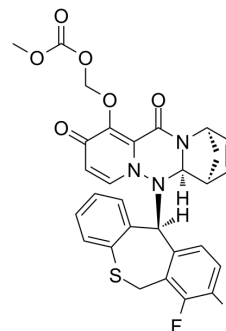


Cap-dependent endonuclease-IN-8

Cat. No.:	HY-143752
CAS No.:	2454680-16-9
Molecular Formula:	C ₂₉ H ₂₃ F ₂ N ₃ O ₆ S
Molecular Weight:	579.57
Target:	Influenza Virus
Pathway:	Anti-infection
Storage:	Please store the product under the recommended conditions in the Certificate of Analysis.



BIOLOGICAL ACTIVITY

Description

Cap-dependent endonuclease-IN-8 is a potent inhibitor of cap-dependent endonuclease (CEN). Cap-dependent endonuclease-IN-8 inhibits replication of orthomyxoviruses (including influenza A, influenza B and influenza C) (extracted from patent CN111410661A, compound I-196)^[1].

REFERENCES

[1]. Yutian Zhou, et al. Cap-dependent endonuclease inhibitor and use thereof. Patent CN111410661A.

Caution: Product has not been fully validated for medical applications. For research use only.

Tel: 609-228-6898

Fax: 609-228-5909

E-mail: tech@MedChemExpress.com

Address: 1 Deer Park Dr, Suite Q, Monmouth Junction, NJ 08852, USA