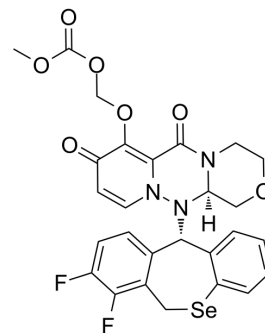


## Cap-dependent endonuclease-IN-15

Cat. No.:	HY-143769
CAS No.:	2581298-44-2
Molecular Formula:	C <sub>27</sub> H <sub>23</sub> F <sub>2</sub> N <sub>3</sub> O <sub>7</sub> Se
Molecular Weight:	618.44
Target:	Influenza Virus
Pathway:	Anti-infection
Storage:	Please store the product under the recommended conditions in the Certificate of Analysis.



### BIOLOGICAL ACTIVITY

#### Description

Cap-dependent endonuclease-IN-15 is a potent inhibitor of cap-dependent endonuclease (CEN). Cap-dependent endonuclease-IN-15 inhibits the replication of influenza virus. Cap-dependent endonuclease-IN-15 has the potential for the research of viral infections caused by influenza viruses (extracted from patent CN113226327A, compound c-1)<sup>[1]</sup>.

### REFERENCES

[1]. Xiaolin Hao, et al. Compounds useful in the treatment of influenza virus infection. Patent CN113226327A.

**Caution: Product has not been fully validated for medical applications. For research use only.**

Tel: 609-228-6898

Fax: 609-228-5909

E-mail: tech@MedChemExpress.com

Address: 1 Deer Park Dr, Suite Q, Monmouth Junction, NJ 08852, USA