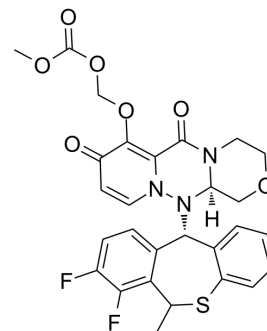


## Cap-dependent endonuclease-IN-16

Cat. No.:	HY-143770
CAS No.:	2643370-92-5
Molecular Formula:	C <sub>28</sub> H <sub>25</sub> F <sub>2</sub> N <sub>3</sub> O <sub>7</sub> S
Molecular Weight:	585.58
Target:	Influenza Virus
Pathway:	Anti-infection
Storage:	Please store the product under the recommended conditions in the Certificate of Analysis.



### BIOLOGICAL ACTIVITY

#### Description

Cap-dependent endonuclease-IN-16 is a potent inhibitor of cap-dependent endonuclease (CEN). Cap-dependent endonuclease-IN-16 is a pyridone polycyclic derivative. Cap-dependent endonuclease-IN-16 has the potential for the research of influenza (extracted from patent CN112778330A, compound 15A)<sup>[1]</sup>.

### REFERENCES

[1]. Hualing Xiao. Inhibitors of pyridone-containing polycyclic derivatives, methods of their preparation and applications. Patent CN112778330A.

**Caution: Product has not been fully validated for medical applications. For research use only.**

Tel: 609-228-6898

Fax: 609-228-5909

E-mail: tech@MedChemExpress.com

Address: 1 Deer Park Dr, Suite Q, Monmouth Junction, NJ 08852, USA