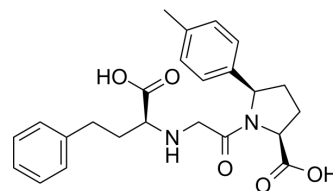


AD013

Cat. No.:	HY-143888
CAS No.:	3010931-81-1
Molecular Formula:	C ₂₄ H ₂₈ N ₂ O ₅
Molecular Weight:	424.49
Target:	Angiotensin-converting Enzyme (ACE)
Pathway:	Metabolic Enzyme/Protease
Storage:	Please store the product under the recommended conditions in the Certificate of Analysis.



BIOLOGICAL ACTIVITY

Description

AD013 is a dual inhibitor of cACE/NEP. AD013 is synthesized based on the previously reported C-domain selective ACE inhibitor lisinopril-tryptophan. AD013 has the potential for providing the potent antihypertensive and cardioprotective benefits^[1].

REFERENCES

[1]. Arendse LB, et al. Probing the Requirements for Dual Angiotensin-Converting Enzyme C-Domain Selective/Nepilysin Inhibition. *J Med Chem.* 2022;65(4):3371-3387.

Caution: Product has not been fully validated for medical applications. For research use only.

Tel: 609-228-6898

Fax: 609-228-5909

E-mail: tech@MedChemExpress.com

Address: 1 Deer Park Dr, Suite Q, Monmouth Junction, NJ 08852, USA