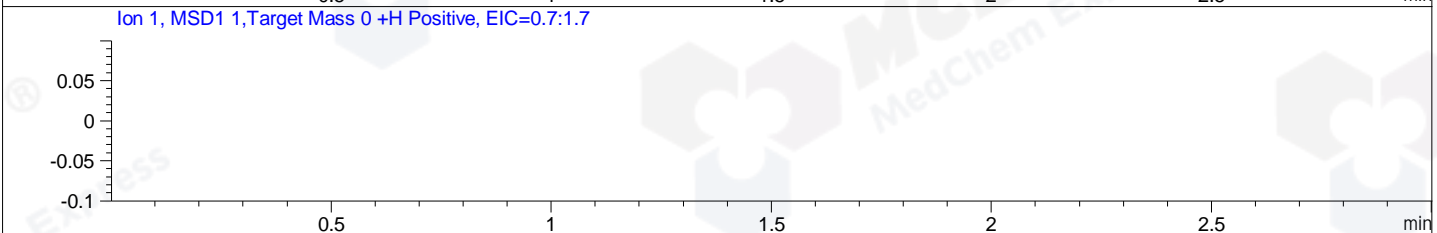
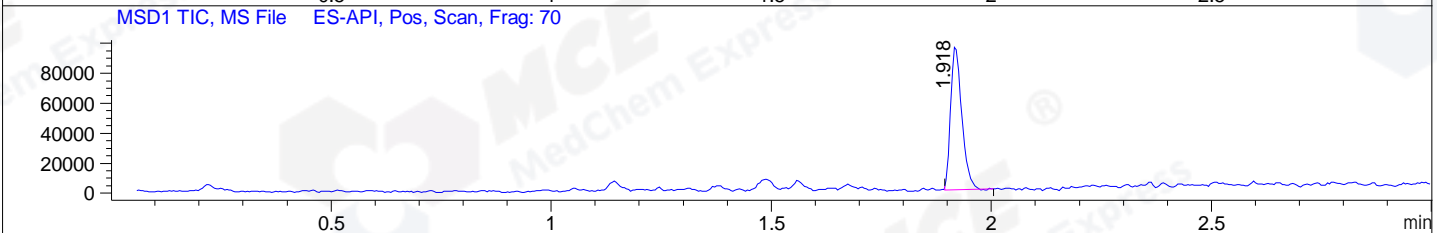
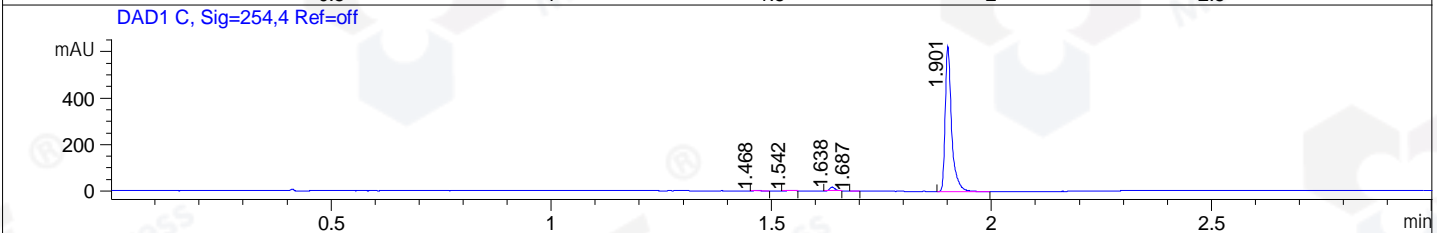
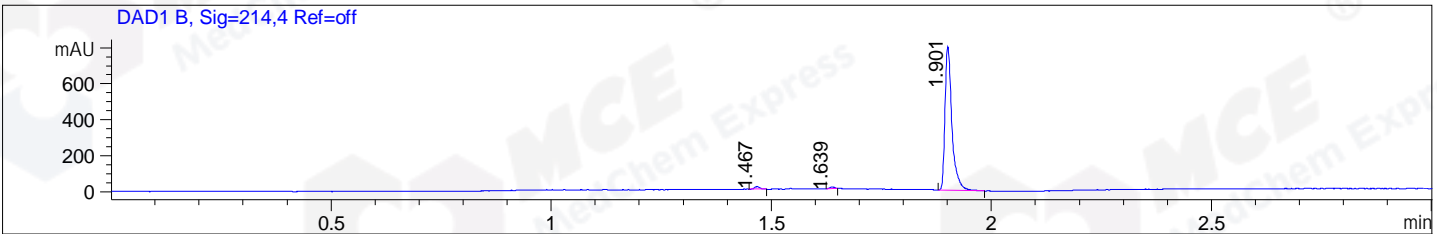


File ..\DATA\2020\20200728\1056\BIZ2020-727-WMX5.D Tgt Mass (CHM):  
 Injection Date : 28 Jul 20 1:21 pm +0800 Seq. Line : 52  
 Sample Name : BIZ2020-727-WMX5 Location : P1-C-01  
 Acq. Operator : ZJ\_1432 Inj : 1  
 Spec. Reported : MS Integration Inj Volume : 1 ul  
 Acq. Method : D:\Chem32\1\data\2020\20200728\1056\1-POS-3MIN.M  
 Analysis Method : D:\CHEM32\1\DATA\2020\20200728\1056\1-POS-3MIN.M  
 Catalog No : HY-14397A  
 Method Info : Mobile Phase: A: water(0.01%TFA) B:ACN(0.01%TFA)  
 Gradient: 5% to 95%B within 1.3 min  
 Flow Rate :1.8ml/min  
 Column :SunFire C18, 4.6\*50mm,3.5um A-RP-314  
 Oven Temperature : 45C



Integration Results for DAD1 B, Sig=214,4 Ref=off

RetTim	Width	Area	Height	Area%	MS (+)
1.47	0.01	10.33	13.11	1.15	190
1.64	0.01	5.95	8.36	0.66	ND
1.90	0.02	879.15	799.59	98.18	358

Integration Results for DAD1 C, Sig=254,4 Ref=off

RetTim	Width	Area	Height	Area%	MS (+)
1.47	0.01	1.37	2.19	0.21	190
1.54	0.01	0.86	1.55	0.13	208
1.64	0.01	10.23	14.19	1.59	ND
1.69	0.01	0.34	0.74	0.05	ND
1.90	0.02	631.60	625.65	98.01	358

Integration Results for MSD1 TIC, MS File

RetTim	Width	Area	Height	Area%	MS (+)
1.92	0.03	168964.59	96547.31	100.00	358

Ret. Time: 1.92

<<<< POSITIVE SPECTRA >>>>

ES-API Positive

