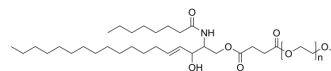


C8 PEG5000 Ceramide

| | |
|-----------|---|
| Cat. No.: | HY-144008A |
| CAS No.: | 212116-76-2 |
| Target: | Liposome |
| Pathway: | Metabolic Enzyme/Protease |
| Storage: | Please store the product under the recommended conditions in the Certificate of Analysis. |



BIOLOGICAL ACTIVITY

| | |
|--------------------|--|
| Description | C8 PEG5000 Ceramide is a lipid product. C8 PEG5000 Ceramide can synthesize lipid bilayer carrier and can be used for drug delivery ^{[1][2]} . |
|--------------------|--|

REFERENCES

- [1]. Karanth H, et, al. pH-sensitive liposomes--principle and application in cancer therapy. J Pharm Pharmacol. 2007 Apr;59(4):469-83.
- [2]. Chen L, et, al. Co-delivery of Doxorubicin and Ceramide in a Liposomal Formulation Enhances Cytotoxicity in Murine B16BL6 Melanoma Cell Lines. AAPS PharmSciTech. 2019 Feb 4;20(3):99.

Caution: Product has not been fully validated for medical applications. For research use only.

Tel: 609-228-6898

Fax: 609-228-5909

E-mail: tech@MedChemExpress.com

Address: 1 Deer Park Dr, Suite Q, Monmouth Junction, NJ 08852, USA