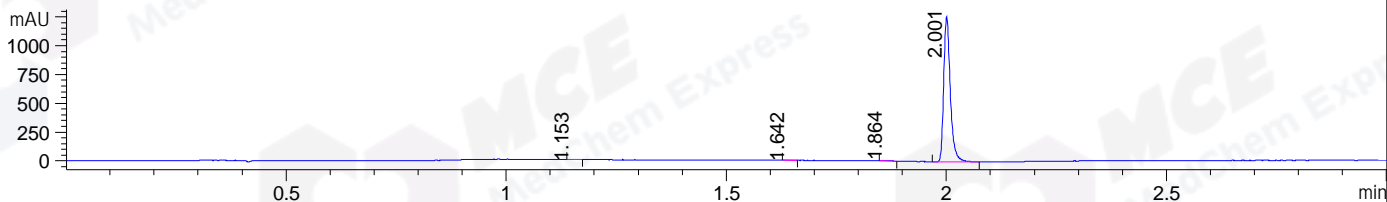
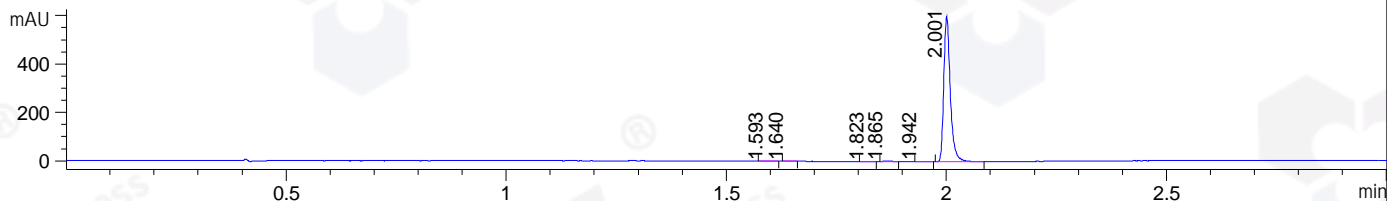


File ..\DATA\2020\20200722\1049\BIZ2020-721-WLQ1.D Tgt Mass (CHM):
 Injection Date : 22 Jul 20 1:32 pm +0800 Seq. Line : 47
 Sample Name : BIZ2020-721-WLQ1 Location : P1-B-05
 Acq. Operator : ZJ_1432 Inj : 1
 Spec. Reported : MS Integration Inj Volume : 1 ul
 Acq. Method : D:\Chem32\1\data\2020\20200722\1049\1-POS-3MIN.M
 Analysis Method : D:\CHEM32\1\DATA\2020\20200722\1049\1-POS-3MIN.M
 Catalog No : HY-14415
 Method Info : Mobile Phase: A: water(0.01%TFA) B:ACN(0.01%TFA)
 Gradient: 5% to 95%B within 1.3 min
 Flow Rate :1.8ml/min
 Column :SunFire C18, 4.6*50mm,3.5um A-RP-607
 Oven Temperature : 45

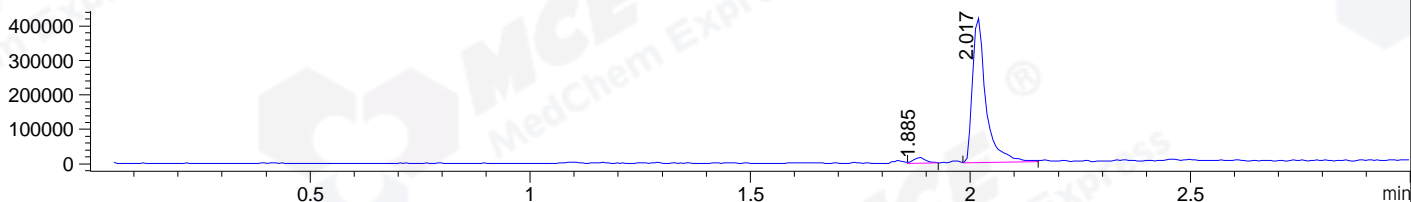
DAD1 B, Sig=214,4 Ref=off



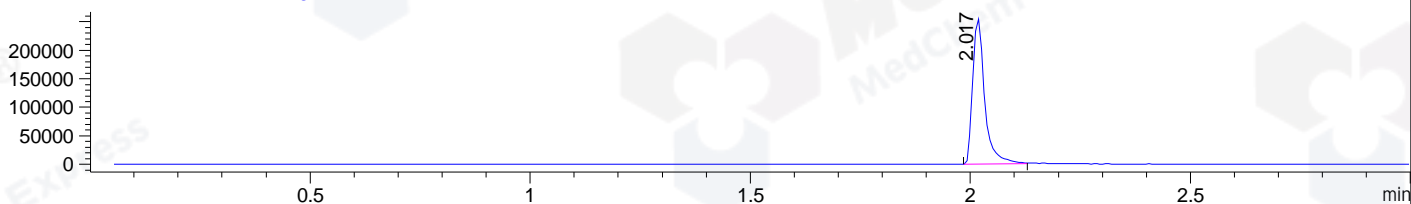
DAD1 C, Sig=254,4 Ref=off



MSD1 TIC, MS File ES-API, Pos, Scan, Frag: 70



Ion 362, MSD1 362, Target Mass 361 +H Positive, EIC=361.7:362.7



Integration Results for DAD1 B, Sig=214,4 Ref=off

RetTim	Width	Area	Height	Area%	MS (+)
1.15	0.01	3.93	4.38	0.30	136
1.64	0.02	2.82	2.85	0.21	ND
1.86	0.02	6.15	5.19	0.47	378
2.00	0.02	1305.78	1262.04	99.02	362

Integration Results for DAD1 C, Sig=254,4 Ref=off

RetTim	Width	Area	Height	Area%	MS (+)
1.59	0.02	1.44	1.25	0.23	ND
1.64	0.01	1.21	1.64	0.19	ND
1.82	0.02	0.95	0.95	0.15	230
1.87	0.02	3.58	3.14	0.57	378
1.94	0.03	1.83	1.17	0.29	ND
2.00	0.02	618.16	601.74	98.56	362

Integration Results for MSD1 TIC, MS File

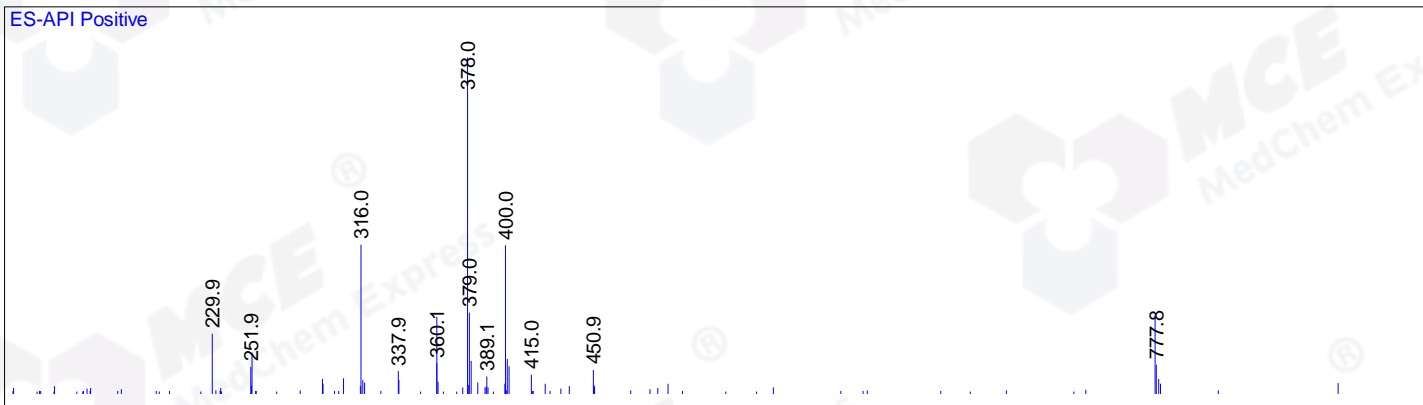
RetTim	Width	Area	Height	Area%	MS (+)
--------	-------	------	--------	-------	--------

1.89	0.03	31548.29	16739.67	3.43	378
2.02	0.03	887050.31	422014.44	96.57	362

Ret. Time: 1.89

<<<< POSITIVE SPECTRA >>>>

ES-API Positive



Ret. Time: 2.02

ES-API Positive

