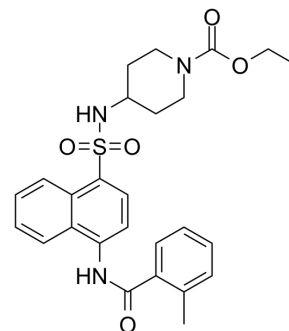


## CCR8 antagonist 1

Cat. No.:	HY-144197
CAS No.:	723304-76-5
Molecular Formula:	C <sub>26</sub> H <sub>29</sub> N <sub>3</sub> O <sub>5</sub> S
Molecular Weight:	495.59
Target:	CCR
Pathway:	GPCR/G Protein; Immunology/Inflammation
Storage:	Please store the product under the recommended conditions in the Certificate of Analysis.



### BIOLOGICAL ACTIVITY

Description	CCR8 antagonist 1 (compound 15) is a potent human CCR8 antagonist with a K <sub>i</sub> of 1.6 nM <sup>[1]</sup> .
IC <sub>50</sub> & Target	CCR8 1.6 nM (K <sub>i</sub> )

### REFERENCES

[1]. Jenkins TJ, et al. Design, synthesis, and evaluation of naphthalene-sulfonamide antagonists of human CCR8. *J Med Chem.* 2007;50(3):566-584.

**Caution: Product has not been fully validated for medical applications. For research use only.**

Tel: 609-228-6898

Fax: 609-228-5909

E-mail: tech@MedChemExpress.com

Address: 1 Deer Park Dr, Suite Q, Monmouth Junction, NJ 08852, USA