

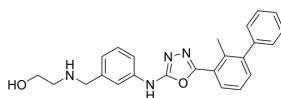
PD-1/PD-L1-IN-14

Cat. No.: HY-144258
CAS No.: 2499965-12-5
Batch No.: 280297
Chemical Name: Ethanol, 2-[[[3-[[[5-(2-methyl[1,1'-biphenyl]-3-yl)-1,3,4-oxadiazol-2-yl]amino]phenyl]methyl]amino]-

PHYSICAL AND CHEMICAL PROPERTIES

Molecular Formula: C₂₄H₂₄N₄O₂
Molecular Weight: 400.47
Storage: 4°C, protect from light
* In solvent : -80°C, 6 months; -20°C, 1 month (protect from light)

Chemical Structure:



ANALYTICAL DATA

Appearance: Light brown to brown (Solid)
¹H NMR Spectrum: Consistent with structure
Purity (HPLC): 99.85%
Conclusion: The product has been tested and complies with the given specifications.

Caution: Product has not been fully validated for medical applications. For research use only.

Tel: 609-228-6898

Fax: 609-228-5909

E-mail: tech@MedChemExpress.com

Address: 1 Deer Park Dr, Suite Q, Monmouth Junction, NJ 08852, USA