

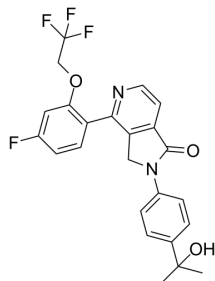
Glucosylceramide synthase-IN-1

Cat. No.:	HY-144266
CAS No.:	2601393-20-6
Batch No.:	229548
Chemical Name:	1H-Pyrrolo[3,4-c]pyridin-1-one, 4-[4-fluoro-2-(2,2,2-trifluoroethoxy)phenyl]-2,3-dihydro-2-[4-(1-hydroxy-1-methylethyl)phenyl]-

PHYSICAL AND CHEMICAL PROPERTIES

Molecular Formula:	C ₂₄ H ₂₀ F ₄ N ₂ O ₃
Molecular Weight:	460.42
Storage:	4°C, sealed storage, away from moisture and light * In solvent : -80°C, 6 months; -20°C, 1 month (sealed storage, away from moisture and light)

Chemical Structure:



ANALYTICAL DATA

Appearance:	White to off-white (Solid)
¹ H NMR Spectrum:	Consistent with structure
MS:	Consistent with structure
Purity (HPLC):	99.83%
Conclusion:	The product has been tested and complies with the given specifications.

Caution: Product has not been fully validated for medical applications. For research use only.

Tel: 609-228-6898

Fax: 609-228-5909

E-mail: tech@MedChemExpress.com

Address: 1 Deer Park Dr, Suite Q, Monmouth Junction, NJ 08852, USA