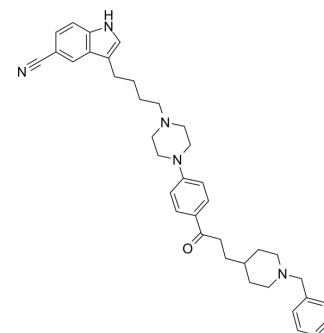


AChE-IN-5

Cat. No.:	HY-144272
Molecular Formula:	C ₃₈ H ₄₅ N ₅ O
Molecular Weight:	587.8
Target:	Cholinesterase (ChE); 5-HT Receptor; Serotonin Transporter
Pathway:	Neuronal Signaling; GPCR/G Protein
Storage:	Please store the product under the recommended conditions in the Certificate of Analysis.



BIOLOGICAL ACTIVITY

Description	AChE-IN-5 (compound 5) exhibits strong in vitro bioactivity against AChE/5-HT _{1A} /SERT and exhibits good BBB permeability. AChE-IN-5 shows IC ₅₀ value 2.29 nM against AChE, EC ₅₀ value 58.6 nM against 5-HT _{1A} and IC ₅₀ value against SERT. Orally active ^[1] .
IC ₅₀ & Target	AChE

REFERENCES

[1]. Li X, et al. The novel therapeutic strategy of vilazodone-donepezil chimeras as potent triple-target ligands for the potential treatment of Alzheimer's disease with comorbid depression. *Eur J Med Chem.* 2022;229:114045.

Caution: Product has not been fully validated for medical applications. For research use only.

Tel: 609-228-6898

Fax: 609-228-5909

E-mail: tech@MedChemExpress.com

Address: 1 Deer Park Dr, Suite Q, Monmouth Junction, NJ 08852, USA