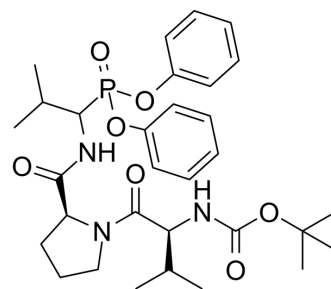


JO146

Cat. No.:	HY-144820
CAS No.:	130727-21-8
Molecular Formula:	C ₃₁ H ₄₄ N ₃ O ₇ P
Molecular Weight:	601.67
Target:	Ser/Thr Protease
Pathway:	Metabolic Enzyme/Protease
Storage:	Please store the product under the recommended conditions in the Certificate of Analysis.



BIOLOGICAL ACTIVITY

Description

JO146 is a Chlamydia trachomatis high temperature requirement A (CtHtrA) protease inhibitor with IC₅₀s of 21.86 and 1.15 μM for CtHtrA and human neutrophil elastase (HNE), respectively. JO146 can be used to inhibit bacterial infections^[1].

REFERENCES

[1]. Jimin Hwang, et al. Design, synthesis and biological evaluation of P2-modified proline analogues targeting the HtrA serine protease in Chlamydia. Eur J Med Chem. 2022 Feb 15;230:114064.

Caution: Product has not been fully validated for medical applications. For research use only.

Tel: 609-228-6898

Fax: 609-228-5909

E-mail: tech@MedChemExpress.com

Address: 1 Deer Park Dr, Suite Q, Monmouth Junction, NJ 08852, USA