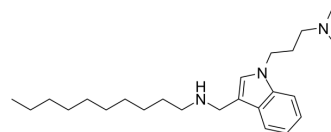


## Dynole 2-24

<b>Cat. No.:</b>	HY-145080		
<b>CAS No.:</b>	1416313-72-8		
<b>Molecular Formula:</b>	C <sub>24</sub> H <sub>41</sub> N <sub>3</sub>		
<b>Molecular Weight:</b>	371.6		
<b>Target:</b>	Dynamain		
<b>Pathway:</b>	Cytoskeleton		
<b>Storage:</b>	Pure form	-20°C	3 years
		4°C	2 years
	In solvent	-80°C	6 months
		-20°C	1 month



### SOLVENT & SOLUBILITY

#### In Vitro

DMSO : ≥ 100 mg/mL (269.11 mM)  
 \* "≥" means soluble, but saturation unknown.

Concentration	Mass		
	1 mg	5 mg	10 mg
1 mM	2.6911 mL	13.4553 mL	26.9107 mL
5 mM	0.5382 mL	2.6911 mL	5.3821 mL
10 mM	0.2691 mL	1.3455 mL	2.6911 mL

Please refer to the solubility information to select the appropriate solvent.

### BIOLOGICAL ACTIVITY

#### Description

Dynole 2-24 is an indole-based dynamain GTPase inhibitor (IC<sub>50</sub>=0.56 μM for dynamain I). Dynole 2-24 is nontoxic and shows increased potency against dynamain I and II in vitro and in cells (IC<sub>50</sub>(CME)=1.9 μM). Dynole 2-24 also shows 4.4-fold selectivity for dynamain I. Dynole 2-24 is active in-cell inhibitor of clathrin-mediated endocytosis<sup>[1]</sup>. CME: Clathrin mediated endocytosis

### REFERENCES

[1]. Gordon CP, Venn-Brown B, Robertson MJ, et al. Development of second-generation indole-based dynamain GTPase inhibitors. J Med Chem. 2013;56(1):46-59.

---

**Caution: Product has not been fully validated for medical applications. For research use only.**

Tel: 609-228-6898

Fax: 609-228-5909

E-mail: [tech@MedChemExpress.com](mailto:tech@MedChemExpress.com)

Address: 1 Deer Park Dr, Suite Q, Monmouth Junction, NJ 08852, USA