

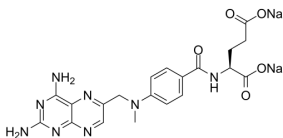
## Methotrexate (disodium)

Cat. No.:	HY-14519A
CAS No.:	7413-34-5
Batch No.:	81188
Chemical Name:	L-Glutamic acid, N-[4-[[[(2,4-diamino-6-pteridiny)l)methyl]methylamino]benzoyl]-, sodium salt (1:2)

### PHYSICAL AND CHEMICAL PROPERTIES

Molecular Formula:	C <sub>20</sub> H <sub>20</sub> N <sub>8</sub> Na <sub>2</sub> O <sub>5</sub>
Molecular Weight:	498.40
Storage:	4°C, sealed storage, away from moisture and light * In solvent : -80°C, 6 months; -20°C, 1 month (sealed storage, away from moisture and light)

### Chemical Structure:



### ANALYTICAL DATA

Appearance:	Light yellow to yellow (Solid)
<sup>1</sup> H NMR Spectrum:	Consistent with structure
LCMS:	Consistent with structure
Purity (LCMS):	98.26%
Conclusion:	The product has been tested and complies with the given specifications.

**Caution: Product has not been fully validated for medical applications. For research use only.**

Tel: 609-228-6898

Fax: 609-228-5909

E-mail: tech@MedChemExpress.com

Address: 1 Deer Park Dr, Suite Q, Monmouth Junction, NJ 08852, USA