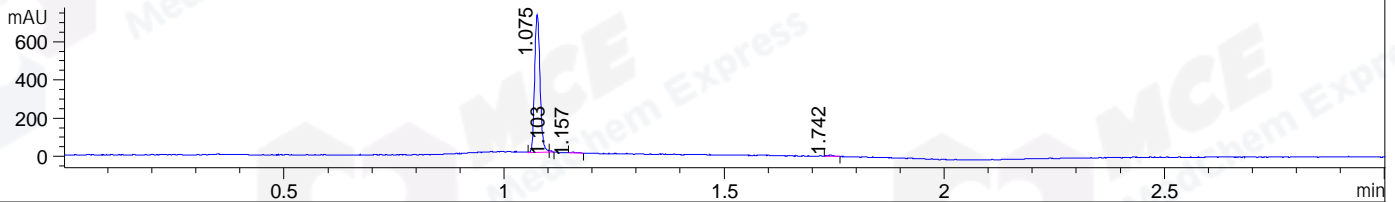
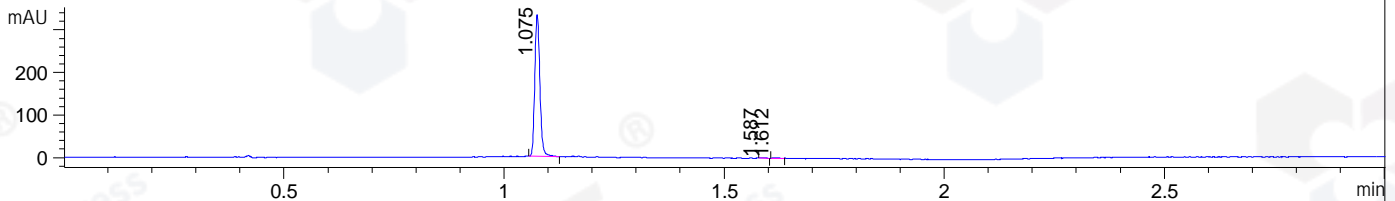


File ..DATA\2020\20200811\1066\BIZ2020-807-WLQ1-.D Tgt Mass (CHM):
 Injection Date : 12 Aug 20 1:14 am +0800 Seq. Line : 138
 Sample Name : BIZ2020-807-WLQ1 Location : P1-D-04
 Acq. Operator : ZJ_1432 Inj : 1
 Spec. Reported : MS Integration Inj Volume : 0.5 ul
 Acq. Method : D:\Chem32\1\data\2020\20200811\1066\1-POS-3MIN.M
 Analysis Method : D:\CHEM32\1\DATA\2020\20200811\1066\1-POS-3MIN.M
 Catalog No : HY-14519A
 Method Info : Mobile Phase: A: water(0.01%TFA) B:ACN(0.01%TFA)
 Gradient: 5% to 95%B within 1.3 min
 Flow Rate :1.8ml/min
 Column :SunFire C18, 4.6*50mm,3.5um A-RP-607
 Oven Temperature : 45C

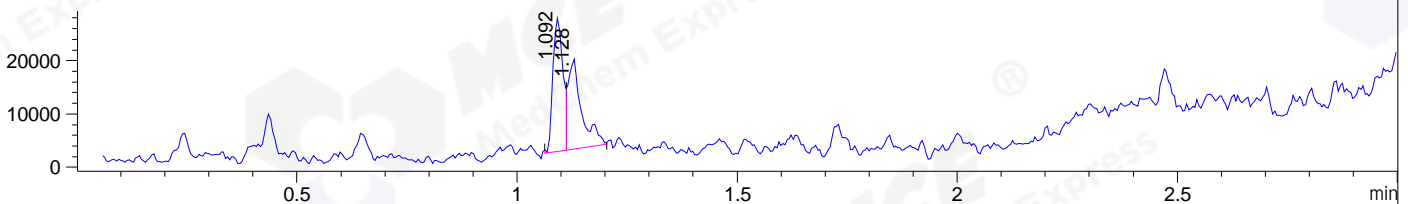
DAD1 B, Sig=214,4 Ref=off



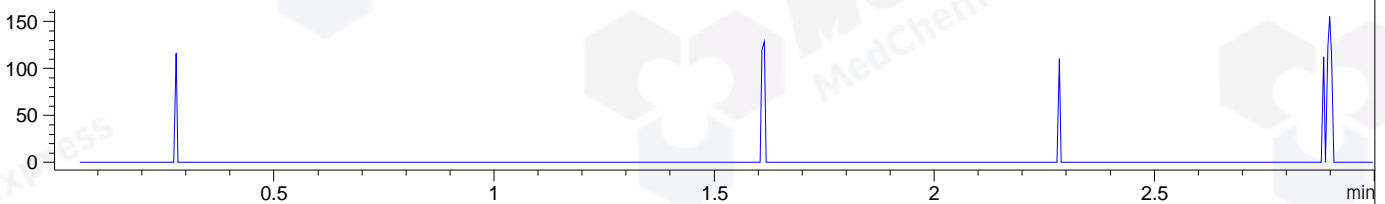
DAD1 C, Sig=254,4 Ref=off



MSD1 TIC, MS File ES-API, Pos, Scan, Frag: 70



Ion 499, MSD1 499, Target Mass 498 +H Positive, EIC=498.7:499.7



Integration Results for DAD1 B, Sig=214,4 Ref=off

RetTim	Width	Area	Height	Area%	MS (+)
1.08	0.01	612.97	722.59	98.26	455
1.10	0.00	2.18	7.57	0.35	455
1.16	0.01	2.88	3.73	0.46	141
1.74	0.02	5.82	6.35	0.93	ND

Integration Results for DAD1 C, Sig=254,4 Ref=off

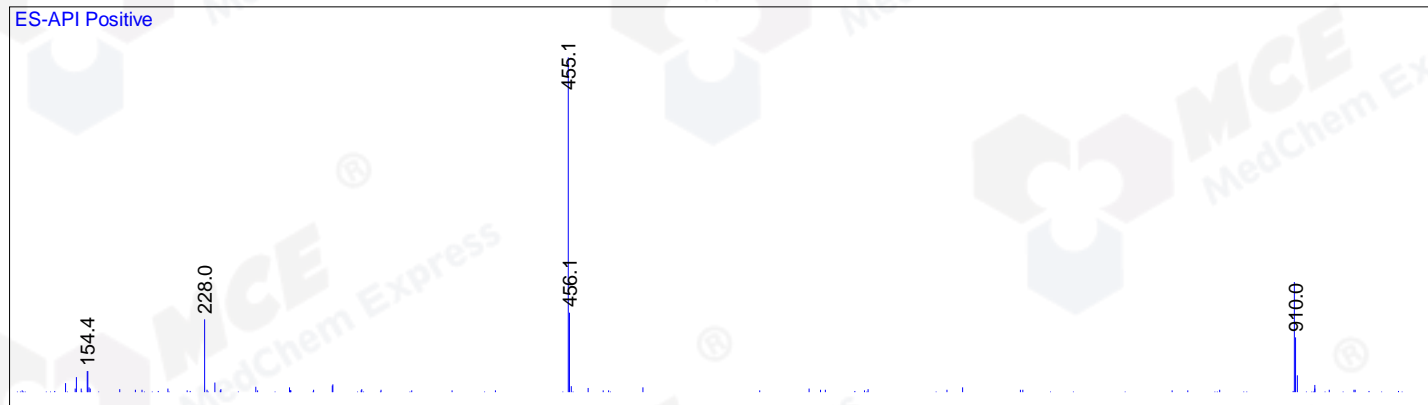
RetTim	Width	Area	Height	Area%	MS (+)
1.08	0.01	267.93	334.66	99.28	455
1.59	0.01	0.91	1.45	0.34	ND
1.61	0.02	1.03	1.02	0.38	275

Integration Results for MSD1 TIC, MS File

RetTim	Width	Area	Height	Area%	MS (+)
1.09	0.03	39406.40	25018.80	52.34	455
1.13	0.03	35879.09	16873.97	47.66	141

Ret. Time: 1.09

<<<< POSITIVE SPECTRA >>>>



Ret. Time: 1.13

