

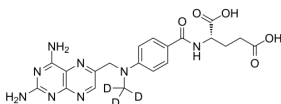
## Methotrexate-d3

Cat. No.: HY-14519S  
CAS No.: 432545-63-6  
Batch No.: 145043  
Chemical Name: L-Glutamic acid, N-[4-[[[(2,4-diamino-6-pteridiny)]methyl]methyl-d3-amino]benzoyl]-

### PHYSICAL AND CHEMICAL PROPERTIES

Molecular Formula: C<sub>20</sub>H<sub>19</sub>D<sub>3</sub>N<sub>8</sub>O<sub>5</sub>  
Molecular Weight: 457.46  
Storage: Powder -20°C 3 years  
In solvent -80°C 6 months  
-20°C 1 month

Chemical Structure:



### ANALYTICAL DATA

Appearance: White to yellow (Solid)  
Purity: ≥99.0%  
Mass spec: MH<sup>+</sup>: 458.0  
TLC: Purity: 100 %  
UV: λ max: 299, 262 nm  
Conclusion: The product has been tested and complies with the given specifications.

**Caution: Product has not been fully validated for medical applications. For research use only.**

Tel: 609-228-6898

Fax: 609-228-5909

E-mail: tech@MedChemExpress.com

Address: 1 Deer Park Dr, Suite Q, Monmouth Junction, NJ 08852, USA