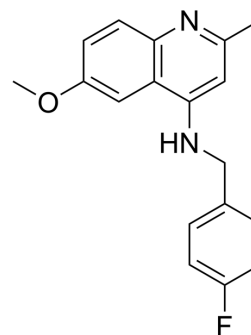


SLEC-11

Cat. No.:	HY-145268
CAS No.:	863761-17-5
Molecular Formula:	C ₁₈ H ₁₇ FN ₂ O
Molecular Weight:	296.34
Target:	Others
Pathway:	Others
Storage:	Please store the product under the recommended conditions in the Certificate of Analysis.



BIOLOGICAL ACTIVITY

Description

SLEC-11 acts as a potential synthetic lethal lead for the research of gastric cancer. AL-GDa62 shows EC₅₀ of 12.2 μM and 8.2 μM for isogenic mammary epithelial cells MCF10A-WT (wild-type) and MCF10A-CDH1^{-/-}[1].

REFERENCES

[1]. Andreas Luxenburger, et al. Discovery of AL-GDa62 as a Potential Synthetic Lethal Lead for the Treatment of Gastric Cancer. *J Med Chem.* 2021 Dec 23;64(24):18114-18142.

Caution: Product has not been fully validated for medical applications. For research use only.

Tel: 609-228-6898

Fax: 609-228-5909

E-mail: tech@MedChemExpress.com

Address: 1 Deer Park Dr, Suite Q, Monmouth Junction, NJ 08852, USA