

File ..DATA\2020\20200603\984\CPK2020-602-08432-.D Tgt Mass (CHM):

Injection Date : 3 Jun 20 12:48 pm +0800 Seq. Line : 52

Sample Name : CPK2020-602-08432 Location : PL-C-01

Acq. Operator : ZJ_1432 Inj : 1

Spec. Reported : MS Integration Inj Volume : 0.5 ul

Acq. Method : D:\Chem32\1\data\2020\20200603\984\1-POS-3MIN.M

Analysis Method : D:\CHEM32\1\DATA\2020\20200603\984\1-POS-3MIN.M

Catalog No : HY-14531

Method Info : Mobile Phase: A: water(0.01%TFA) B:ACN(0.01%TFA)

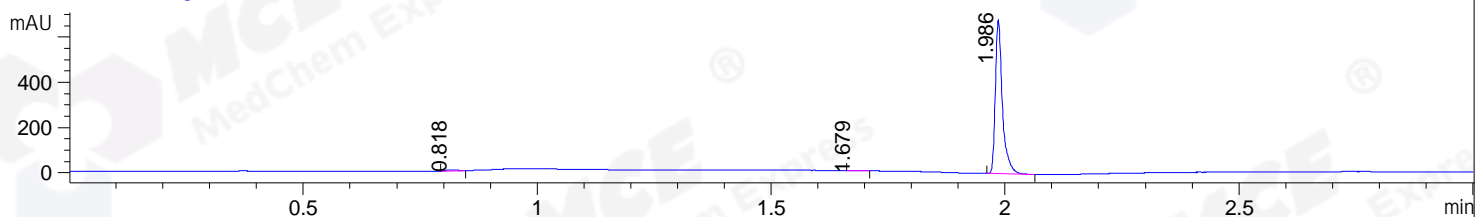
Gradient: 5% to 95%B within 1.3 min

Flow Rate :1.8ml/min

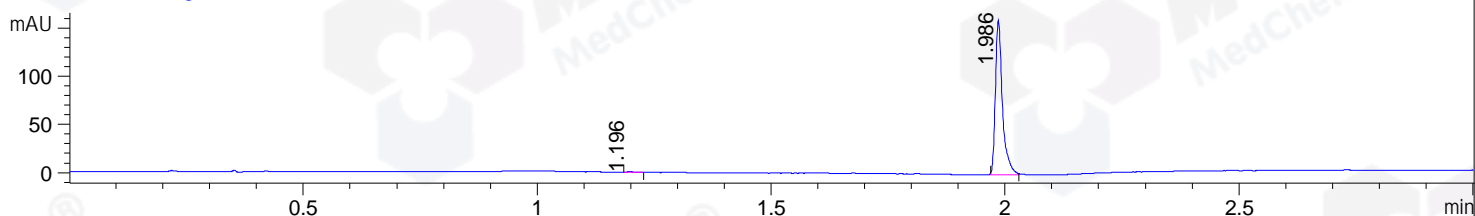
Column :SunFire C18, 4.6*50mm,3.5um A-RP-607

Oven Temperature : 45□

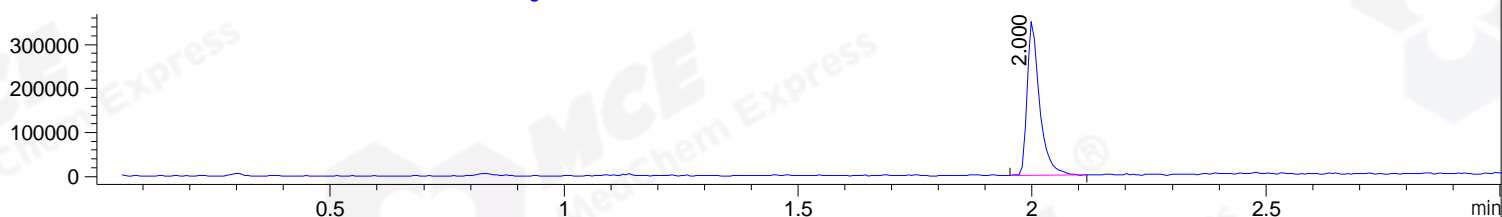
DAD1 B, Sig=214,4 Ref=off



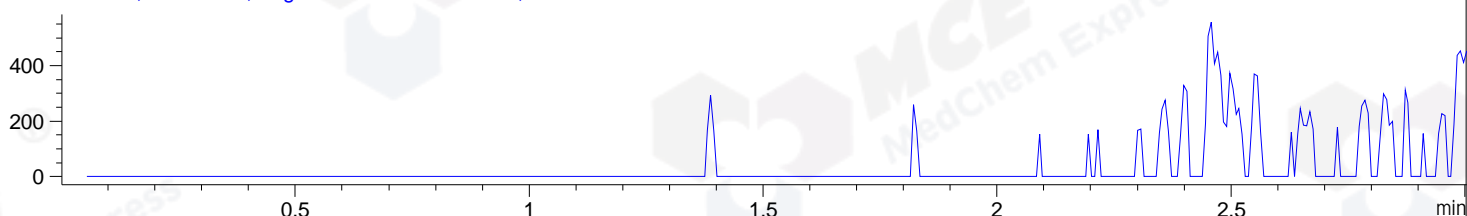
DAD1 C, Sig=254,4 Ref=off



MSD1 TIC, MS File ES-API, Pos, Scan, Frag: 70



Ion 338, MSD1 338, Target Mass 337 +H Positive, EIC=337.7:338.7



Integration Results for DAD1 B, Sig=214,4 Ref=off

RetTim	Width	Area	Height	Area%	MS (+)
0.82	0.02	5.43	3.42	0.76	142
1.68	0.02	1.41	1.43	0.20	ND
1.99	0.02	709.49	679.54	99.04	309

Integration Results for DAD1 C, Sig=254,4 Ref=off

RetTim	Width	Area	Height	Area%	MS (+)
1.20	0.02	0.37	0.39	0.22	ND
1.99	0.02	167.77	160.42	99.78	309

Integration Results for MSD1 TIC, MS File

RetTim	Width	Area	Height	Area%	MS (+)
2.00	0.03	650651.63	351914.66	100.00	309

Ret. Time: 2.00

<<<< POSITIVE SPECTRA >>>>

ES-API Positive

