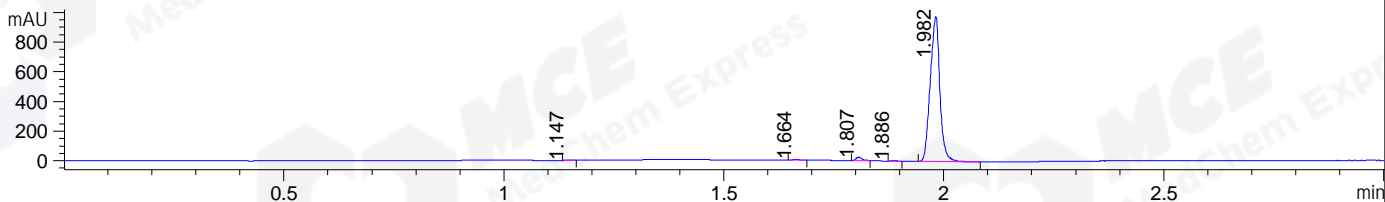
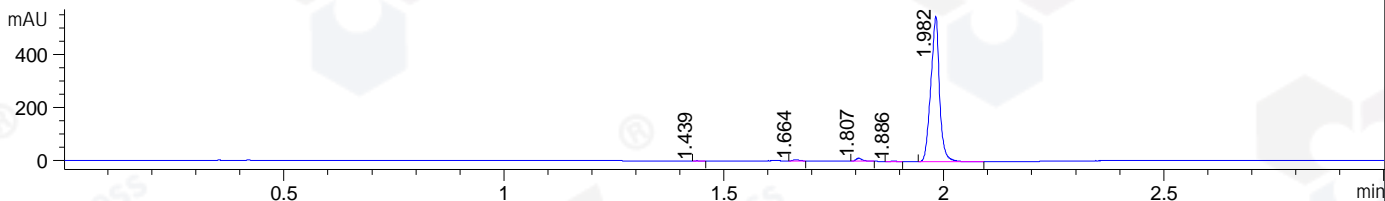


File ..\DATA\2019\20190718\636\CPK2019-717-20433.D Tgt Mass (CHM):
 Injection Date : 18 Jul 19 4:23 pm +0800 Seq. Line : 41
 Sample Name : CPK2019-717-20433 Location : P1-E-03
 Acq. Operator : ZJ_1432 Inj : 1
 Spec. Reported : MS Integration Inj Volume : 1 ul
 Acq. Method : D:\Chem32\1\data\2019\20190718\636\1-POS-3MIN.M
 Analysis Method : D:\CHEM32\1\DATA\2019\20190718\636\1-POS-3MIN.M
 Catalog No : HY-14533 Batch# 20433
 Method Info : Mobile Phase: A: water(0.01%TFA) B:ACN(0.01%TFA)
 Gradient: 5% to 95%B within 1.3 min
 Flow Rate :1.8ml/min
 Column :SunFire C18, 4.6*50mm,3.5um A-RP-433
 Oven Temperature : 45

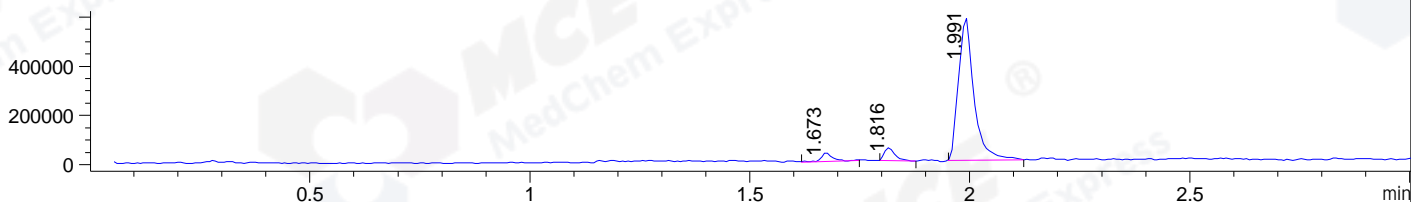
DAD1 B, Sig=214,4 Ref=off



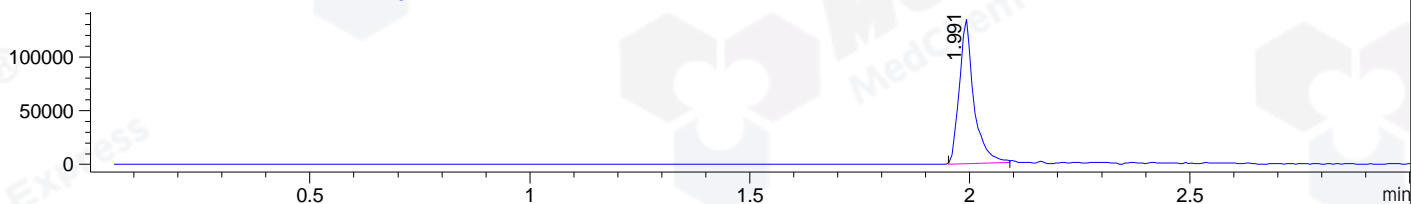
DAD1 C, Sig=254,4 Ref=off



MSD1 TIC, MS File ES-API, Pos, Scan, Frag: 70



Ion 289.1895, MSD1 289.1895, Target Mass 288.1895 +H Positive, EIC=288.89:289.89



Integration Results for DAD1 B, Sig=214,4 Ref=off

RetTim	Width	Area	Height	Area%	MS (+)
1.15	0.02	4.40	4.15	0.29	967
1.66	0.02	6.97	6.94	0.46	210
1.81	0.02	23.01	22.63	1.51	302
1.89	0.01	2.66	3.18	0.17	276
1.98	0.03	1484.87	978.68	97.57	290

Integration Results for DAD1 C, Sig=254,4 Ref=off

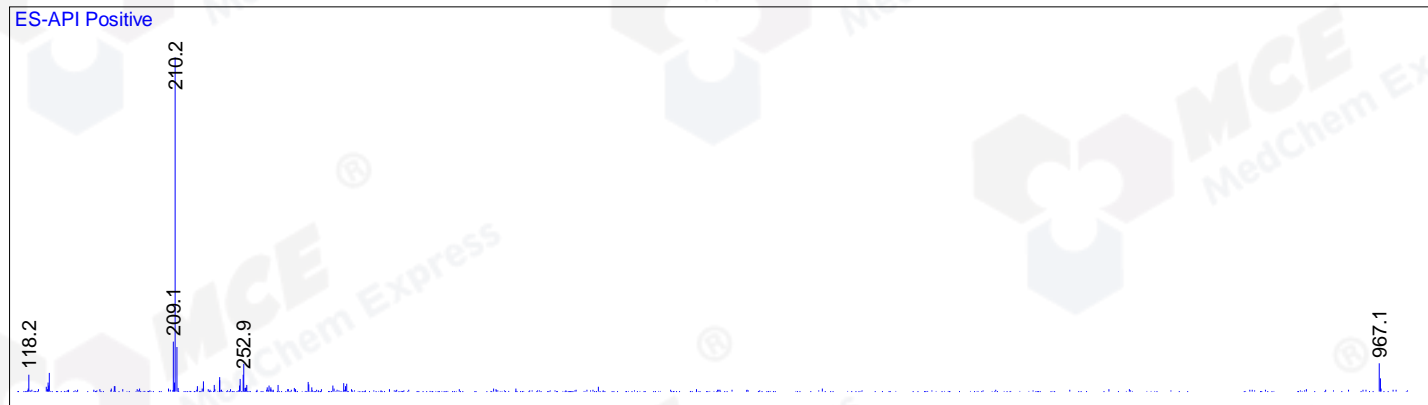
RetTim	Width	Area	Height	Area%	MS (+)
1.44	0.01	0.40	0.48	0.05	ND
1.66	0.01	4.63	4.82	0.60	210
1.81	0.02	11.43	11.33	1.47	302
1.89	0.01	1.11	1.24	0.14	276
1.98	0.02	757.73	549.61	97.73	288

Integration Results for MSD1 TIC, MS File

RetTim	Width	Area	Height	Area%	MS (+)
--------	-------	------	--------	-------	--------

1.67	0.03	62498.54	35272.36	3.96	210
1.82	0.03	85916.90	52460.27	5.44	302
1.99	0.04	1431538.25	582301.31	90.61	288

Ret. Time: 1.67 <<<< POSITIVE SPECTRA >>>>



Ret. Time: 1.82



Ret. Time: 1.99

