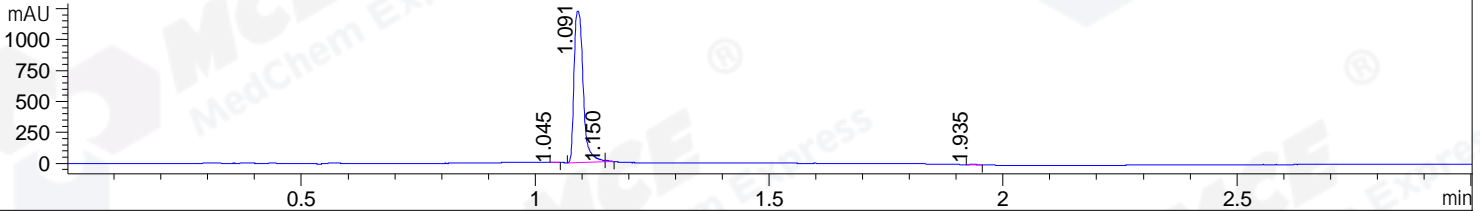
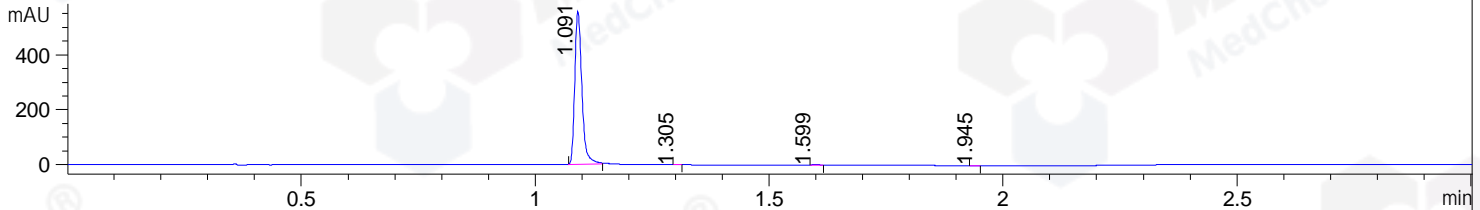


File ..\DATA\2019\20190517\580\CPK2019-516-22214.D Tgt Mass (CHM):
 Injection Date : 17 May 19 1:45 pm +0800 Seq. Line : 16
 Sample Name : CPK2019-516-22214 Location : P1-B-05
 Acq. Operator : LQ_1052 Inj : 1
 Spec. Reported : MS Integration Inj Volume : 1 ul
 Acq. Method : D:\Chem32\1\data\2019\20190517\580\1-POS-3MIN.M
 Analysis Method : D:\CHEM32\1\DATA\2019\20190517\580\1-POS-3MIN.M
 Catalog No : HY-14537 Batch#22214
 Method Info : Mobile Phase: A: water(0.01%TFA) B:ACN(0.01%TFA)
 Gradient: 5% to 95%B within 1.3 min
 Flow Rate :1.8ml/min
 Column :SunFire C18, 4.6*50mm,3.5um A-RP-322
 Oven Temperature : 45

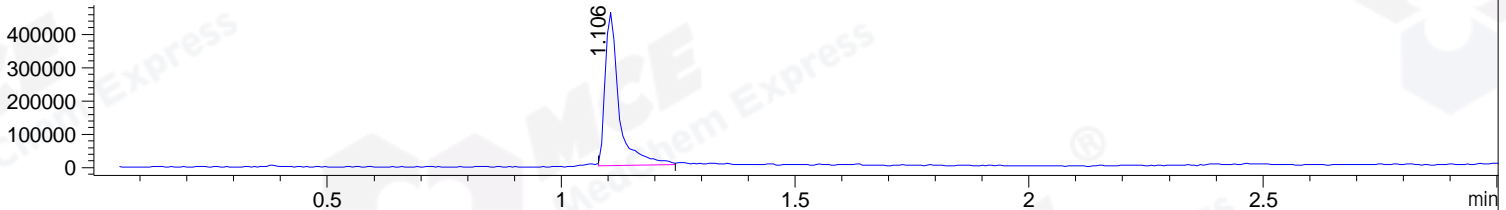
DAD1 B, Sig=214,4 Ref=off



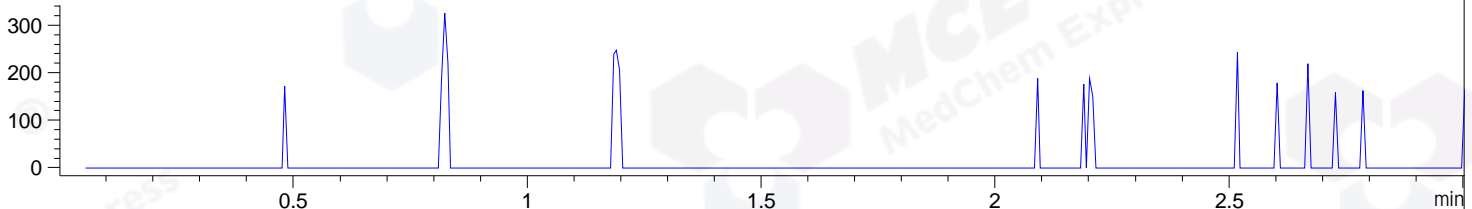
DAD1 C, Sig=254,4 Ref=off



MSD1 TIC, MS File ES-API, Pos, Scan, Frag: 70



Ion 393.4, MSD1 393.4, Target Mass 392.4 +H Positive, EIC=393.1:394.1



Integration Results for DAD1 B, Sig=214,4 Ref=off

RetTim	Width	Area	Height	Area%	MS (+)
1.04	0.02	1.38	1.41	0.08	ND
1.09	0.02	1658.54	1225.04	99.45	320
1.15	0.01	6.12	10.06	0.37	320
1.94	0.02	1.67	1.26	0.10	320

Integration Results for DAD1 C, Sig=254,4 Ref=off

RetTim	Width	Area	Height	Area%	MS (+)
1.09	0.02	588.14	557.29	99.75	320
1.31	0.01	0.19	0.27	0.03	320
1.60	0.01	1.03	1.22	0.17	320
1.95	0.01	0.27	0.32	0.05	320

Integration Results for MSD1 TIC, MS File

RetTim	Width	Area	Height	Area%	MS (+)
1.11	0.03	953519.75	459883.88	100.00	320

Ret. Time: 1.11

<<<< POSITIVE SPECTRA >>>>

ES-API Positive

