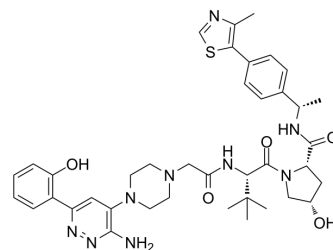


AU-16235

Cat. No.:	HY-145388B
CAS No.:	2380275-40-9
Molecular Formula:	C ₃₉ H ₄₉ N ₉ O ₅ S
Molecular Weight:	755.93
Target:	Others
Pathway:	Others
Storage:	4°C, stored under nitrogen, away from moisture * In solvent : -80°C, 6 months; -20°C, 1 month (stored under nitrogen, away from moisture)



SOLVENT & SOLUBILITY

In Vitro	DMSO : 100 mg/mL (132.29 mM; Need ultrasonic)					
	Preparing Stock Solutions	<div>Solvent Concentration</div>	Mass	1 mg	5 mg	10 mg
		1 mM		1.3229 mL	6.6144 mL	13.2287 mL
		5 mM		0.2646 mL	1.3229 mL	2.6457 mL
		10 mM		0.1323 mL	0.6614 mL	1.3229 mL
Please refer to the solubility information to select the appropriate solvent.						
In Vivo	1. Add each solvent one by one: 10% DMSO >> 40% PEG300 >> 5% Tween-80 >> 45% saline Solubility: ≥ 5 mg/mL (6.61 mM); Clear solution					
	2. Add each solvent one by one: 10% DMSO >> 90% (20% SBE-β-CD in saline) Solubility: ≥ 5 mg/mL (6.61 mM); Clear solution					
	3. Add each solvent one by one: 10% DMSO >> 90% corn oil					
	Solubility: ≥ 5 mg/mL (6.61 mM); Clear solution					

BIOLOGICAL ACTIVITY

Description	AU-16235 is an inactive epimer of AU-15330. AU-16235 has no effect on cancer cell survival and growth ^[1]
-------------	--

REFERENCES

[1]. Xiao L, et al. Targeting SWI/SNF ATPases in enhancer-addicted prostate cancer. Nature. 2022;601(7893):434-439.

Caution: Product has not been fully validated for medical applications. For research use only.

Tel: 609-228-6898

Fax: 609-228-5909

E-mail: tech@MedChemExpress.com

Address: 1 Deer Park Dr, Suite Q, Monmouth Junction, NJ 08852, USA