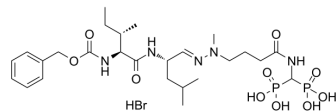


## BT-GSI

Cat. No.:	HY-145428
Molecular Formula:	C <sub>26</sub> H <sub>46</sub> BrN <sub>5</sub> O <sub>10</sub> P <sub>2</sub>
Molecular Weight:	730.52
Target:	Notch; $\gamma$ -secretase
Pathway:	Neuronal Signaling; Stem Cell/Wnt
Storage:	Please store the product under the recommended conditions in the Certificate of Analysis.



## BIOLOGICAL ACTIVITY

### Description

BT-GSI is a  $\gamma$ -secretase inhibitor (GSI) and a bone-targeted Notch inhibitor. BT-GSI has dual anti-myeloma and anti-resorptive properties, which can be used for the research of multiple myeloma and associated bone disease. BT-GSI inhibits tumor growth and osteolytic disease progression<sup>[1]</sup>.

## REFERENCES

[1]. Hayley M Sabol, et al. Targeting Notch Inhibitors to the Myeloma Bone Marrow Niche Decreases Tumor Growth and Bone Destruction without Gut Toxicity. *Cancer Res.* 2021 Oct 1;81(19):5102-5114.

**Caution: Product has not been fully validated for medical applications. For research use only.**

Tel: 609-228-6898

Fax: 609-228-5909

E-mail: tech@MedChemExpress.com

Address: 1 Deer Park Dr, Suite Q, Monmouth Junction, NJ 08852, USA