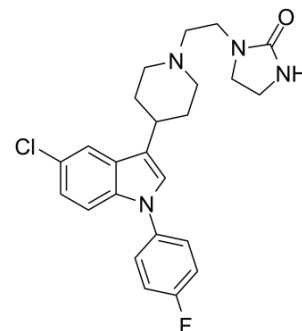


Sertindole

Cat. No.:	HY-14543		
CAS No.:	106516-24-9		
Molecular Formula:	C ₂₄ H ₂₆ ClFN ₄ O		
Molecular Weight:	440.94		
Target:	5-HT Receptor; Dopamine Receptor; Adrenergic Receptor; Autophagy		
Pathway:	GPCR/G Protein; Neuronal Signaling; Autophagy		
Storage:	Powder	-20°C	3 years
		4°C	2 years
	In solvent	-80°C	6 months
		-20°C	1 month



SOLVENT & SOLUBILITY

In Vitro

DMSO : 25 mg/mL (56.70 mM; Need ultrasonic)

	Solvent Concentration	Mass		
		1 mg	5 mg	10 mg
Preparing Stock Solutions	1 mM	2.2679 mL	11.3394 mL	22.6788 mL
	5 mM	0.4536 mL	2.2679 mL	4.5358 mL
	10 mM	0.2268 mL	1.1339 mL	2.2679 mL

Please refer to the solubility information to select the appropriate solvent.

In Vivo

- Add each solvent one by one: 10% DMSO >> 40% PEG300 >> 5% Tween-80 >> 45% saline
Solubility: ≥ 2.5 mg/mL (5.67 mM); Clear solution
- Add each solvent one by one: 10% DMSO >> 90% (20% SBE-β-CD in saline)
Solubility: ≥ 2.5 mg/mL (5.67 mM); Clear solution
- Add each solvent one by one: 10% DMSO >> 90% corn oil
Solubility: ≥ 2.5 mg/mL (5.67 mM); Clear solution

BIOLOGICAL ACTIVITY

Description

Sertindole, a neuroleptic, is one of the newer antipsychotic medications available. Target: Multi-target. In vitro studies showed that sertindole exerts a potent antagonism at serotonin 5-HT_{2A}, 5-HT_{2C}, dopamine D₂, and α₁ adrenergic receptors. Sertindole offers an alternative treatment option for refractory patients given its good EPS profile, favorable metabolic profile, and comparable efficacy to risperidone. Due to cardiovascular safety concerns, sertindole is available as a second-line choice for patients intolerant to other antipsychotic agents [1]. Sertindole should prove to be a very useful addition to the therapeutic options available for the treatment of psychotic disorders [2]. Sertindole improves negative symptoms, and is also effective for the treatment of neuroleptic-resistant schizophrenia. Sertindole is generally well tolerated and is

associated with a low rate of extrapyramidal symptoms (EPS). Thus, sertindole is a useful option in the treatment of patients with schizophrenia [3].

IC ₅₀ & Target	5-HT _{2A} Receptor	5-HT _{2C} Receptor
---------------------------	-----------------------------	-----------------------------

REFERENCES

- [1]. Juruena, M.F., E.P. de Sena, and I.R. de Oliveira, Sertindole in the management of schizophrenia. J Cent Nerv Syst Dis, 2011. 3: p. 75-85.
- [2]. Kane, J.M. and C.A. Tamminga, Sertindole (Serdolect): preclinical and clinical findings of a new atypical antipsychotic. Expert Opin Investig Drugs, 1997. 6(11): p. 1729-41.
- [3]. Murdoch, D. and G.M. Keating, Sertindole : a review of its use in schizophrenia. CNS Drugs, 2006. 20(3): p. 233-55.
-

Caution: Product has not been fully validated for medical applications. For research use only.

Tel: 609-228-6898

Fax: 609-228-5909

E-mail: tech@MedChemExpress.com

Address: 1 Deer Park Dr, Suite Q, Monmouth Junction, NJ 08852, USA