

File ..\DATA\2020\20200511\952\BIZ2020-509-SCH5-.D Tgt Mass (CHM):

Injection Date : 11 May 20 12:40 pm +0800 Seq. Line : 38

Sample Name : BIZ2020-509-SCH5 Location : P1-A-05

Acq. Operator : ZJ_1432 Inj : 1

Spec. Reported : MS Integration Inj Volume : 0.5 ul

Acq. Method : D:\Chem32\1\data\2020\20200511\952\1-POS-3MIN.M

Analysis Method : D:\CHEM32\1\DATA\2020\20200511\952\1-POS-3MIN.M

Catalog No : HY-14543

Method Info : Mobile Phase: A: water(0.01%TFA) B:ACN(0.01%TFA)

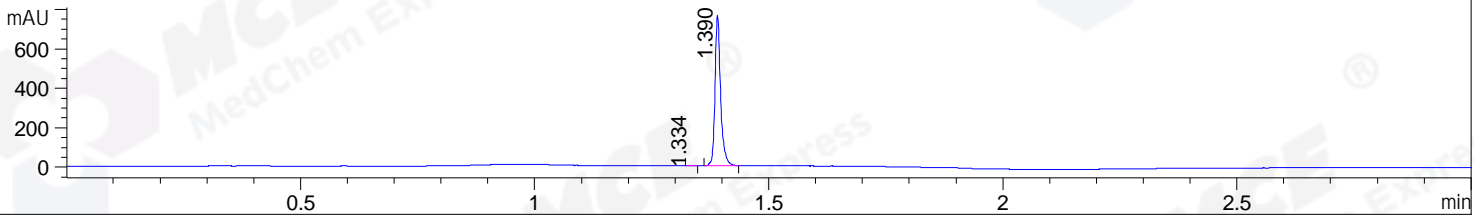
Gradient: 5% to 95%B within 1.3 min

Flow Rate :1.8ml/min

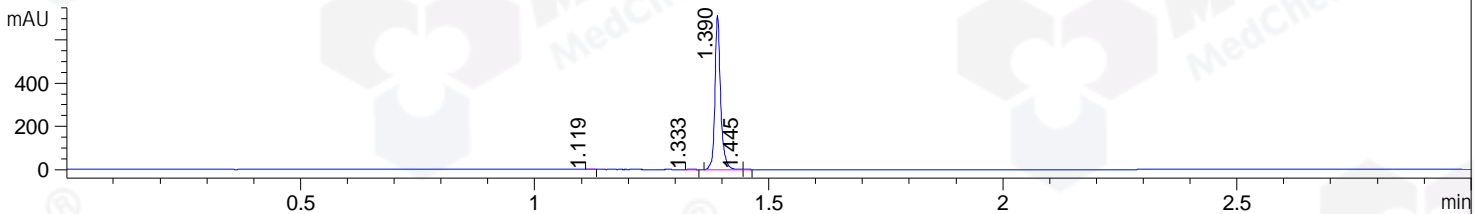
Column :SunFire C18, 4.6*50mm,3.5um A-RP-607

Oven Temperature : 45

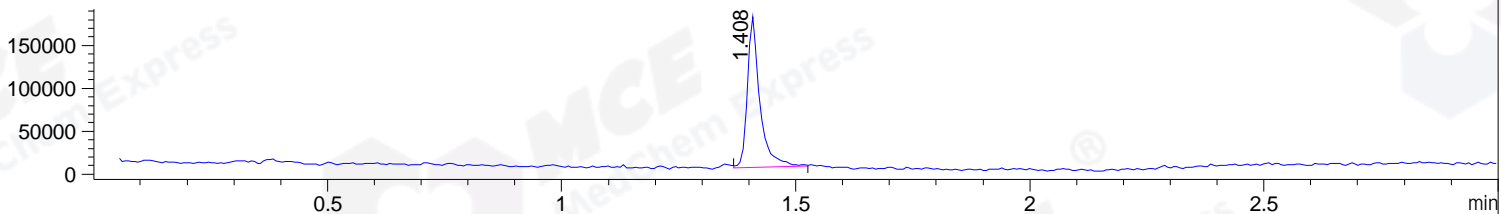
DAD1 B, Sig=214,4 Ref=off



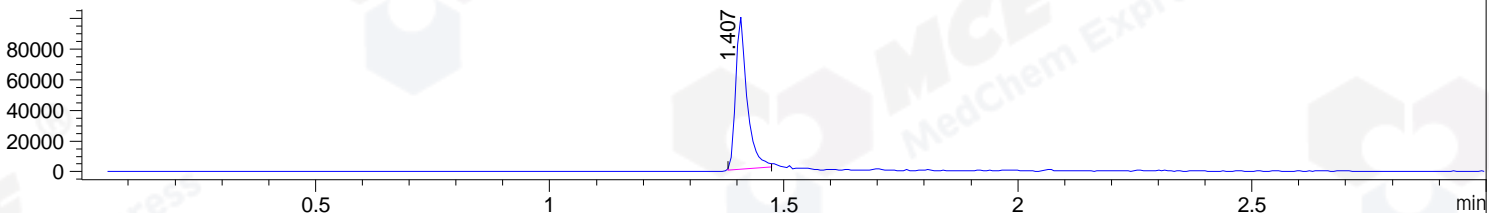
DAD1 C, Sig=254,4 Ref=off



MSD1 TIC, MS File ES-API, Pos, Scan, Frag: 70



Ion 441, MSD1 441, Target Mass 440 +H Positive, EIC=440.7:441.7



Integration Results for DAD1 B, Sig=214,4 Ref=off

RetTim	Width	Area	Height	Area%	MS (+)
1.33	0.01	1.56	2.24	0.24	157
1.39	0.01	641.85	766.76	99.76	441

Integration Results for DAD1 C, Sig=254,4 Ref=off

RetTim	Width	Area	Height	Area%	MS (+)
1.12	0.01	0.45	0.66	0.07	157
1.33	0.01	1.30	1.83	0.21	157
1.39	0.01	608.53	717.81	99.65	441
1.44	0.01	0.41	0.64	0.07	441

Integration Results for MSD1 TIC, MS File

RetTim	Width	Area	Height	Area%	MS (+)
1.41	0.03	330166.41	176254.59	100.00	441

Ret. Time: 1.41

<<<< POSITIVE SPECTRA >>>>

ES-API Positive

