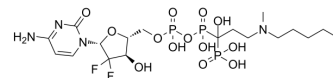


GEM-IB

Cat. No.:	HY-145441
CAS No.:	2866211-93-8
Molecular Formula:	C ₁₈ H ₃₃ F ₂ N ₄ O ₁₃ P ₃
Molecular Weight:	644.39
Target:	Others
Pathway:	Others
Storage:	Please store the product under the recommended conditions in the Certificate of Analysis.



BIOLOGICAL ACTIVITY

Description

GEM-IB is the conjugate of gemcitabine (GEM)-5'-phosphate with ibandronate (IB). GEM-IB as a single agent or in combination with Docetaxel (DTX) demonstrates reduced tumor burden, preservation of the bone architecture, and improved the survival in a murine model of osteosarcoma (OS)^[1].

REFERENCES

[1]. Farrell KB, et al. Gemcitabine-Ibandronate Conjugate Enables the Bone-Targeted Combination Therapy in Bone Cancer: Synthesis and Efficacy in Combination with Docetaxel. *Bioconjug Chem.*

Caution: Product has not been fully validated for medical applications. For research use only.

Tel: 609-228-6898

Fax: 609-228-5909

E-mail: tech@MedChemExpress.com

Address: 1 Deer Park Dr, Suite Q, Monmouth Junction, NJ 08852, USA