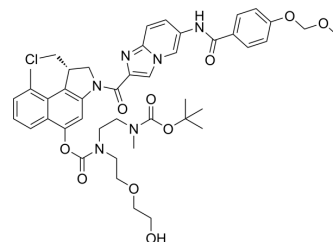


MethylCBI-azaindole-benzamide-MOM-Boc-ethylenediamine-D

Cat. No.:	HY-145488
CAS No.:	2222445-87-4
Molecular Formula:	C ₄₄ H ₅₁ ClN ₆ O ₁₀
Molecular Weight:	859.36
Target:	ADC Linker
Pathway:	Antibody-drug Conjugate/ADC Related
Storage:	<div>Powder -20°C 3 years</div> <div>In solvent -80°C 6 months</div> <div> -20°C 1 month</div>



BIOLOGICAL ACTIVITY

Description	MethylCBI-azaindole-benzamide-MOM-Boc-ethylenediamine-D is a cleavable ADC linker used in the synthesis of antibody-drug conjugates (ADCs) ^[1] .
IC ₅₀ & Target	Cleavable Linker
In Vitro	ADCs are comprised of an antibody to which is attached an ADC cytotoxin through an ADC linker ^[1] . MCE has not independently confirmed the accuracy of these methods. They are for reference only.

REFERENCES

[1]. Beck A, et al. Strategies and challenges for the next generation of antibody-drug conjugates. Nat Rev Drug Discov. 2017;16(5):315-337.

Caution: Product has not been fully validated for medical applications. For research use only.

Tel: 609-228-6898

Fax: 609-228-5909

E-mail: tech@MedChemExpress.com

Address: 1 Deer Park Dr, Suite Q, Monmouth Junction, NJ 08852, USA