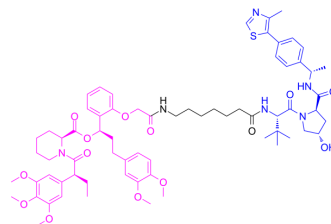


dTAGV-1-NEG

Cat. No.:	HY-145514A
CAS No.:	2451573-87-6
Molecular Formula:	C ₆₈ H ₉₀ N ₆ O ₁₄ S
Molecular Weight:	1247.54
Target:	FKBP; PROTACS
Pathway:	Apoptosis; Autophagy; Immunology/Inflammation; PROTAC
Storage:	Please store the product under the recommended conditions in the Certificate of Analysis.



BIOLOGICAL ACTIVITY

Description	dTAGV-1-NEG is a diastereomer and as a heterobifunctional negative control of dTAGV-1. dTAGV-1 is an FKBP12 ^{F36V} -selective degrader ^[1] .								
In Vitro	<p>dTAGV-1-NEG (1-10 μM; 24 h) not induces the degradation of FKBP12^{F36V}-Nluc on 293FT FKBP12^{F36V}-Nluc or FKBP12^{WT}-Nluc cells^[1].</p> <p>dTAGV-1-NEG (500 nM; 24 h) dose not induce the degradation of KRAS^{G12V} protein in PATU-8902 FKBP12^{F36V}-KRASG12V and KRAS^{-/-} cells^[1].</p> <p>MCE has not independently confirmed the accuracy of these methods. They are for reference only.</p> <p>Western Blot Analysis^[1]</p> <table border="1"> <tr> <td>Cell Line:</td> <td>PATU-8902 FKBP12^{F36V}-KRASG12V, KRAS^{-/-} cells</td> </tr> <tr> <td>Concentration:</td> <td>500 nM</td> </tr> <tr> <td>Incubation Time:</td> <td>1-24 h</td> </tr> <tr> <td>Result:</td> <td>Not induced the degradation of KRAS^{G12V} protein.</td> </tr> </table>	Cell Line:	PATU-8902 FKBP12 ^{F36V} -KRASG12V, KRAS ^{-/-} cells	Concentration:	500 nM	Incubation Time:	1-24 h	Result:	Not induced the degradation of KRAS ^{G12V} protein.
Cell Line:	PATU-8902 FKBP12 ^{F36V} -KRASG12V, KRAS ^{-/-} cells								
Concentration:	500 nM								
Incubation Time:	1-24 h								
Result:	Not induced the degradation of KRAS ^{G12V} protein.								

REFERENCES

[1]. Nabet B, et al. Rapid and direct control of target protein levels with VHL-recruiting dTAG molecules. Nat Commun. 2020 Sep 18;11(1):4687.

Caution: Product has not been fully validated for medical applications. For research use only.

Tel: 609-228-6898

Fax: 609-228-5909

E-mail: tech@MedChemExpress.com

Address: 1 Deer Park Dr, Suite Q, Monmouth Junction, NJ 08852, USA