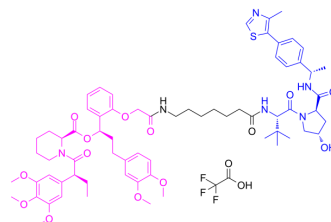


dTAGV-1-NEG TFA

Cat. No.:	HY-145514B
Molecular Formula:	C ₇₀ H ₉₁ F ₃ N ₆ O ₁₆ S
Molecular Weight:	1361.56
Target:	PROTACs; FKBP
Pathway:	PROTAC; Apoptosis; Autophagy; Immunology/Inflammation
Storage:	Please store the product under the recommended conditions in the Certificate of Analysis.



BIOLOGICAL ACTIVITY

Description	dTAGV-1-NEG TFA is a diastereomer and as a heterobifunctional negative control of dTAGV-1. dTAGV-1-NEG TFA is an FKBP12 ^{F36V} -selective degrader ^[1] .																
In Vitro	<p>dTAGV-1-NEG TFA (1-10 μM; 24 h) not induces the degradation of FKBP12^{F36V}-Nluc on 293FT FKBP12^{F36V}-Nluc or FKBP12^{WT}-Nluc cells^[1].</p> <p>dTAGV-1-NEG TFA (500 nM; 24 h) dose not induce the degradation of KRAS^{G12V} protein in PATU-8902 FKBP12^{F36V}-KRASG12V and KRAS^{-/-} cells^[1].</p> <p>MCE has not independently confirmed the accuracy of these methods. They are for reference only.</p> <p>Western Blot Analysis^[1]</p> <table border="1"> <tr> <td>Cell Line:</td> <td>PATU-8902 FKBP12^{F36V}-KRASG12V, KRAS^{-/-} cells</td> </tr> <tr> <td>Concentration:</td> <td>50, 500 nM</td> </tr> <tr> <td>Incubation Time:</td> <td>24 hours</td> </tr> <tr> <td>Result:</td> <td>Not induced the degradation of KRAS^{G12V} protein.</td> </tr> </table> <p>Cell Viability Assay^[1]</p> <table border="1"> <tr> <td>Cell Line:</td> <td>EWS502 FKBP12F36V-GFP cells</td> </tr> <tr> <td>Concentration:</td> <td>1 μM</td> </tr> <tr> <td>Incubation Time:</td> <td>0, 2, 4, 6, 8 days</td> </tr> <tr> <td>Result:</td> <td>Showed relative growth of cells same as the control group, higher than dTAGV-1 treated group.</td> </tr> </table>	Cell Line:	PATU-8902 FKBP12 ^{F36V} -KRASG12V, KRAS ^{-/-} cells	Concentration:	50, 500 nM	Incubation Time:	24 hours	Result:	Not induced the degradation of KRAS ^{G12V} protein.	Cell Line:	EWS502 FKBP12F36V-GFP cells	Concentration:	1 μM	Incubation Time:	0, 2, 4, 6, 8 days	Result:	Showed relative growth of cells same as the control group, higher than dTAGV-1 treated group.
Cell Line:	PATU-8902 FKBP12 ^{F36V} -KRASG12V, KRAS ^{-/-} cells																
Concentration:	50, 500 nM																
Incubation Time:	24 hours																
Result:	Not induced the degradation of KRAS ^{G12V} protein.																
Cell Line:	EWS502 FKBP12F36V-GFP cells																
Concentration:	1 μM																
Incubation Time:	0, 2, 4, 6, 8 days																
Result:	Showed relative growth of cells same as the control group, higher than dTAGV-1 treated group.																

REFERENCES

[1]. Nabet B, et al. Rapid and direct control of target protein levels with VHL-recruiting dTAG molecules. Nat Commun. 2020 Sep 18;11(1):4687.

Caution: Product has not been fully validated for medical applications. For research use only.

Tel: 609-228-6898

Fax: 609-228-5909

E-mail: tech@MedChemExpress.com

Address: 1 Deer Park Dr, Suite Q, Monmouth Junction, NJ 08852, USA