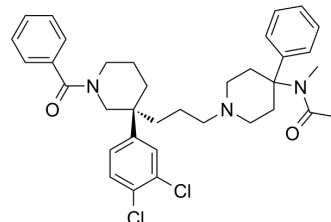


## (S)-Osanetant

<b>Cat. No.:</b>	HY-14551B
<b>CAS No.:</b>	182621-58-5
<b>Molecular Formula:</b>	C <sub>35</sub> H <sub>41</sub> Cl <sub>2</sub> N <sub>3</sub> O <sub>2</sub>
<b>Molecular Weight:</b>	606.62
<b>Target:</b>	Neurotensin Receptor
<b>Pathway:</b>	GPCR/G Protein; Neuronal Signaling
<b>Storage:</b>	4°C, sealed storage, away from moisture and light * In solvent : -80°C, 6 months; -20°C, 1 month (sealed storage, away from moisture and light)



### SOLVENT & SOLUBILITY

<b>In Vitro</b>	DMSO : 70 mg/mL (115.39 mM; Need ultrasonic)					
	<b>Preparing Stock Solutions</b>	<b>Solvent</b>	<b>Mass</b>	<b>1 mg</b>	<b>5 mg</b>	<b>10 mg</b>
		<b>Concentration</b>				
		<b>1 mM</b>		1.6485 mL	8.2424 mL	16.4848 mL
		<b>5 mM</b>		0.3297 mL	1.6485 mL	3.2970 mL
	<b>10 mM</b>		0.1648 mL	0.8242 mL	1.6485 mL	
Please refer to the solubility information to select the appropriate solvent.						
<b>In Vivo</b>	1. Add each solvent one by one: 10% DMSO >> 40% PEG300 >> 5% Tween-80 >> 45% saline Solubility: ≥ 2.5 mg/mL (4.12 mM); Clear solution  2. Add each solvent one by one: 10% DMSO >> 90% corn oil Solubility: ≥ 2.5 mg/mL (4.12 mM); Clear solution					

### BIOLOGICAL ACTIVITY

<b>Description</b>	(S)-Osanetant is the S-enantiomer of Osanetant. Osanetant (SR142801) is a selective NK3 receptor antagonist. Osanetant produces anxiolytic- and antidepressant-like effects and is researched for schizophrenia <sup>[1]</sup> .
--------------------	----------------------------------------------------------------------------------------------------------------------------------------------------------------------------------------------------------------------------------

### REFERENCES

[1]. Salomé N, et al. Selective blockade of NK2 or NK3 receptors produces anxiolytic- and antidepressant-like effects in gerbils. *Pharmacol Biochem Behav.* 2006 Apr;83(4):533-9.

---

**Caution: Product has not been fully validated for medical applications. For research use only.**

Tel: 609-228-6898

Fax: 609-228-5909

E-mail: [tech@MedChemExpress.com](mailto:tech@MedChemExpress.com)

Address: 1 Deer Park Dr, Suite Q, Monmouth Junction, NJ 08852, USA