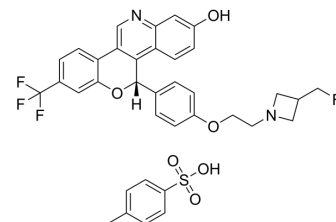


(S)-Imlunestrant tosylate

Cat. No.:	HY-145572B
CAS No.:	2408840-43-5
Molecular Formula:	C ₃₆ H ₃₂ F ₄ N ₂ O ₆ S
Molecular Weight:	696.71
Target:	Others
Pathway:	Others
Storage:	4°C, sealed storage, away from moisture * In solvent : -80°C, 6 months; -20°C, 1 month (sealed storage, away from moisture)



SOLVENT & SOLUBILITY

In Vitro	DMSO : 100 mg/mL (143.53 mM; Need ultrasonic)					
	Preparing Stock Solutions	Solvent	Mass	1 mg	5 mg	10 mg
		Concentration				
		1 mM		1.4353 mL	7.1766 mL	14.3532 mL
		5 mM		0.2871 mL	1.4353 mL	2.8706 mL
10 mM		0.1435 mL	0.7177 mL	1.4353 mL		
Please refer to the solubility information to select the appropriate solvent.						
In Vivo	<ol style="list-style-type: none"> Add each solvent one by one: 10% DMSO >> 40% PEG300 >> 5% Tween-80 >> 45% saline Solubility: ≥ 2.5 mg/mL (3.59 mM); Clear solution Add each solvent one by one: 10% DMSO >> 90% (20% SBE-β-CD in saline) Solubility: ≥ 2.5 mg/mL (3.59 mM); Clear solution Add each solvent one by one: 10% DMSO >> 90% corn oil Solubility: ≥ 2.5 mg/mL (3.59 mM); Clear solution 					

BIOLOGICAL ACTIVITY

Description	(S)-Imlunestrant ((S)-LY-3484356) tosylate is an (S)-enantiomer of Imlunestrant (HY-145572). (S)-Imlunestrant tosylate can be used in research of cancer ^[1] .
--------------------	---

REFERENCES

[1]. Jolie AB, et, al. Selective estrogen receptor degraders. WO2020014435.

Caution: Product has not been fully validated for medical applications. For research use only.

Tel: 609-228-6898

Fax: 609-228-5909

E-mail: tech@MedChemExpress.com

Address: 1 Deer Park Dr, Suite Q, Monmouth Junction, NJ 08852, USA