

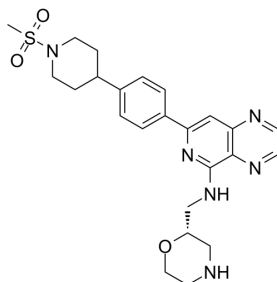
## Sovleplenib

Cat. No.: HY-145598  
CAS No.: 1415792-84-5  
Batch No.: 180504  
Chemical Name: Pyrido[3,4-b]pyrazin-5-amine, 7-[4-[1-(methylsulfonyl)-4-piperidinyl]phenyl]-N-[(2S)-2-morpholinylmethyl]-

### PHYSICAL AND CHEMICAL PROPERTIES

Molecular Formula:  $C_{24}H_{30}N_6O_3S$   
Molecular Weight: 482.60  
Storage: Powder      -20°C    3 years  
                                  4°C      2 years  
                                  In solvent   -80°C    6 months  
   -20°C    1 month

Chemical Structure:



### ANALYTICAL DATA

Appearance: Light green to green (Solid)  
 $^1H$  NMR Spectrum: Consistent with structure  
LCMS: Consistent with structure  
Purity (LCMS): 99.56%  
Conclusion: The product has been tested and complies with the given specifications.

**Caution: Product has not been fully validated for medical applications. For research use only.**

Tel: 609-228-6898

Fax: 609-228-5909

E-mail: tech@MedChemExpress.com

Address: 1 Deer Park Dr, Suite Q, Monmouth Junction, NJ 08852, USA