

File ..018\20180410\20180410-1\CPK2018-410-16383.D Tgt Mass (CHM):

Injection Date : 10 Apr 18 9:20 pm +0800 Seq. Line : 34

Sample Name : CPK2018-410-16383 Location : P2-D-06

Acq. Operator : SYSTEM Inj : 1

Spec. Reported : MS Integration Inj Volume : 1 ul

Acq. Method : D:\LCMS03\Data\2018\20180410\20180410-1\1-POS-3MIN.M

Analysis Method : D:\LCMS03\Data\2018\20180410\20180410-1\1-POS-3MIN.M

Catalog No : HY-14560C Batch#16383

Method Info : Mobile Phase: A: water(0.01%TFA) B:ACN(0.01%TFA)

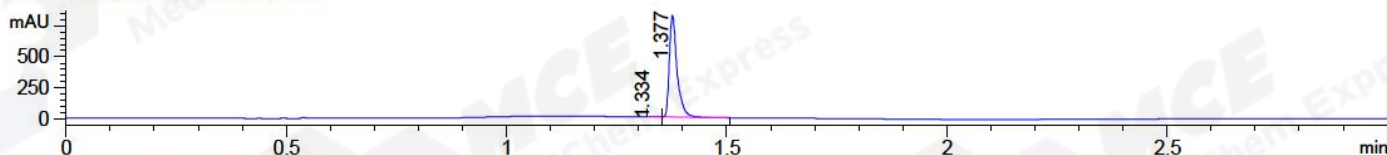
Gradient: 5% to 95%B within 1.3 min

Flow Rate :1.8ml/min

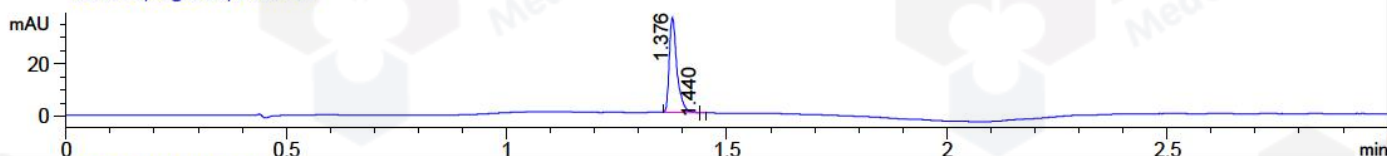
Column :SunFire C18, 4.6*50mm,3.5um A-RP-186

Oven Temperature : 45C

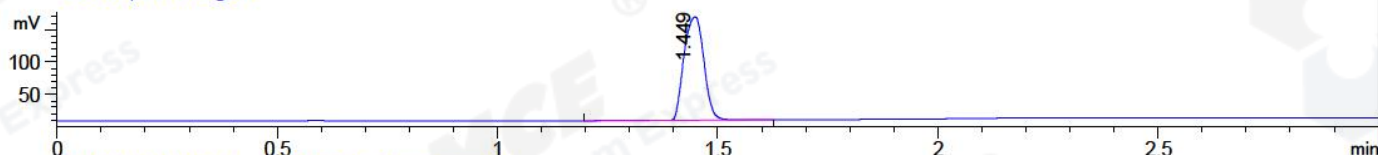
DAD1 A, Sig=214,4 Ref=off



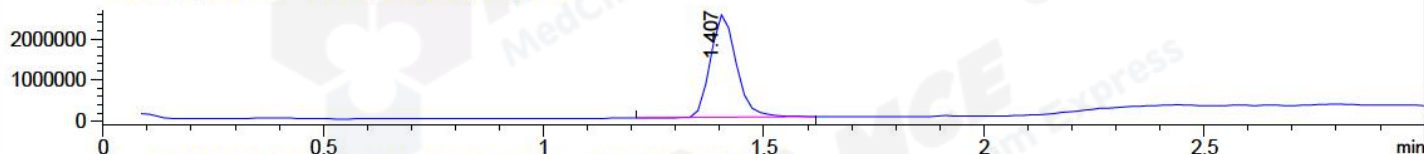
DAD1 B, Sig=254,4 Ref=off



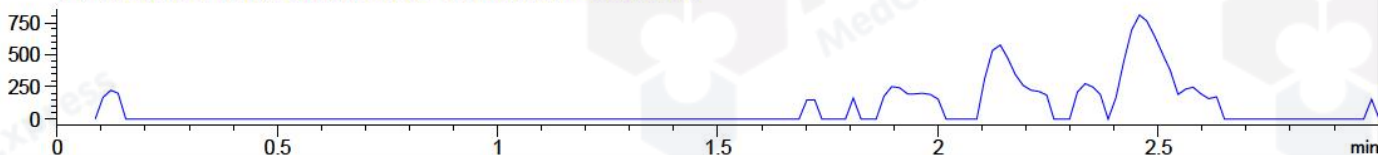
ELS1 A, ELSD Signal



MSD1 TIC, MS File ES-API, Pos, Scan, Frag: 70



Ion 410.5, MSD1 410.5, Target Mass 409.5 +H Positive, EIC=410.2:411.2



Integration Results for DAD1 A, Sig=214,4 Ref=off

RetTim	Width	Area	Height	Area%	MS (+)
1.33	0.02	1.33	1.31	0.13	314
1.38	0.02	1007.62	818.84	99.87	314

Integration Results for DAD1 B, Sig=254,4 Ref=off

RetTim	Width	Area	Height	Area%	MS (+)
1.38	0.02	43.60	36.04	99.97	314
1.44	0.01	0.01	0.01	0.03	314

Integration Results for ELS1 A, ELSD Signal

RetTim	Width	Area	Height	Area%	MS (+)
1.45	0.05	503.03	159.92	100.00	314

Integration Results for MSD1 TIC, MS File

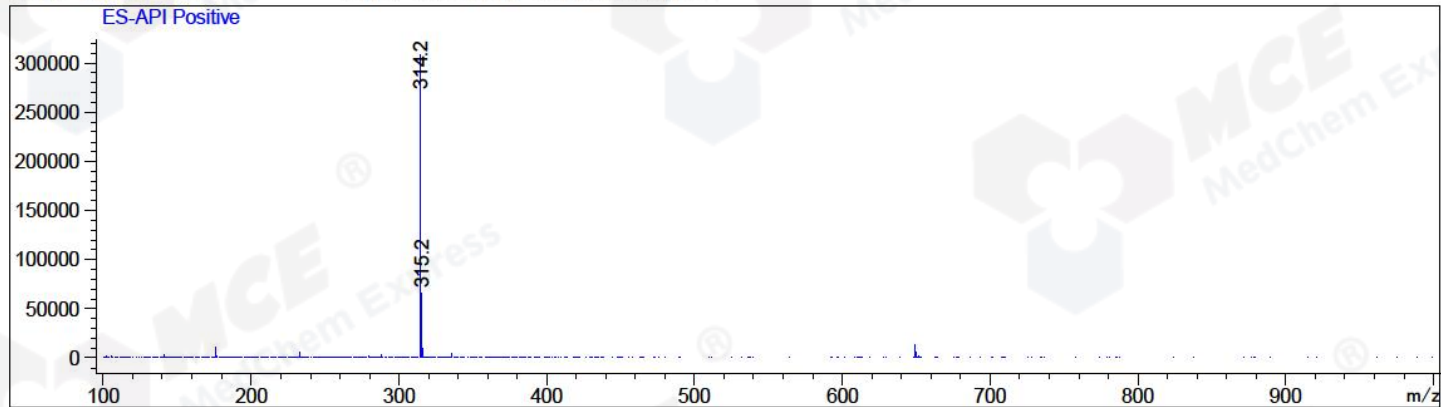
1.41 0.06 10304776.00 2504257.50 100.00 314

RetTim	Width	Area	Height	Area%	MS (+)
--------	-------	------	--------	-------	--------

-----|-----|-----|-----|-----|-----|

Ret. Time: 1.41

<<<< POSITIVE SPECTRA >>>>



*** End of Report ***