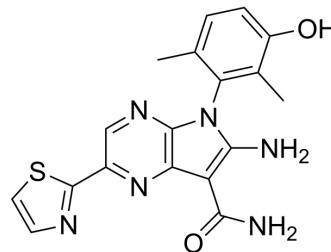


## Myt1-IN-2

Cat. No.:	HY-145665
CAS No.:	2719748-43-1
Molecular Formula:	C <sub>18</sub> H <sub>16</sub> N <sub>6</sub> O <sub>2</sub> S
Molecular Weight:	380.42
Target:	Wee1
Pathway:	Cell Cycle/DNA Damage
Storage:	Please store the product under the recommended conditions in the Certificate of Analysis.



### BIOLOGICAL ACTIVITY

#### Description

Myt1-IN-2 is a potent Myt1 inhibitor with an IC<sub>50</sub> of <10 nM. Myt1-IN-2 has anticancer effects (WO2021195782A1; compound 28)<sup>[1]</sup>.

### REFERENCES

[1]. Daniel Durocher, et al. Methods of using myt1 inhibitors. WO2021195782A1.

**Caution: Product has not been fully validated for medical applications. For research use only.**

Tel: 609-228-6898

Fax: 609-228-5909

E-mail: tech@MedChemExpress.com

Address: 1 Deer Park Dr, Suite Q, Monmouth Junction, NJ 08852, USA