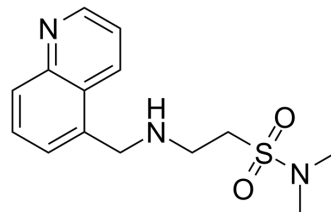


UCSF686

Cat. No.:	HY-145699
CAS No.:	2248852-19-7
Molecular Formula:	C ₁₄ H ₁₉ N ₃ O ₂ S
Molecular Weight:	293.38
Target:	5-HT Receptor
Pathway:	GPCR/G Protein; Neuronal Signaling
Storage:	Please store the product under the recommended conditions in the Certificate of Analysis.



BIOLOGICAL ACTIVITY

Description

UCSF686 is a probe with which to study the function of the 5-HT_{5A}R. UCSF686 loses affinity at 5-HT_{5A}R (>10 000 nM) but not at 5-HT_{1A}R, 5-HT_{2B}R, and 5-HT₇R. UCSF686 controls for off-target effects^[1].

REFERENCES

[1]. Levit Kaplan A, et al. Structure-Based Design of a Chemical Probe Set for the 5-HT_{5A} Serotonin Receptor. J Med Chem. 2022;65(5):4201-4217.

Caution: Product has not been fully validated for medical applications. For research use only.

Tel: 609-228-6898

Fax: 609-228-5909

E-mail: tech@MedChemExpress.com

Address: 1 Deer Park Dr, Suite Q, Monmouth Junction, NJ 08852, USA