

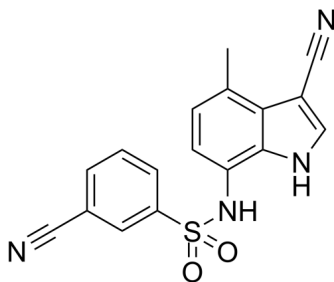
**E7820**

Cat. No.: HY-14571  
Batch No.: 29026  
CAS No.: 289483-69-8  
Molecular Formula: C<sub>17</sub>H<sub>12</sub>N<sub>4</sub>O<sub>2</sub>S

**ANALYTICAL DATA**

Theoretical: C(60.70%)、H(3.60%)、N(16.66%)  
Result: C(61.02%)、H(3.90%)、N(16.56%)

Chemical Structure:



Caution: Product has not been fully validated for medical applications. For research use only.

Tel: 609-228-6898

Fax: 609-228-5909

E-mail: tech@MedChemExpress.com

Address: 1 Deer Park Dr, Suite Q, Monmouth Junction, NJ 08852, USA