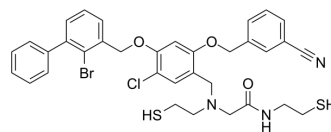


N2S2-CBMBC

Cat. No.:	HY-145769
CAS No.:	2547100-02-5
Molecular Formula:	C ₃₄ H ₃₃ BrClN ₃ O ₃ S ₂
Molecular Weight:	711.13
Target:	PD-1/PD-L1
Pathway:	Immunology/Inflammation
Storage:	Please store the product under the recommended conditions in the Certificate of Analysis.



BIOLOGICAL ACTIVITY

Description

N2S2-CBMBC, an N2S2 bromo-benzyl ether derivative, acts as a ligand and use ^{99m}Tc-labelled complexes ^{99m}Tc-N2S2-CBMBC can be used as an imaging agent to be applied to the aspect of detecting PD-L1 expression, realize the real-time, comprehensive and convenient detection of the PD-L1 level of tumors, and overcome the defects of an immunohistochemical method^[1].

REFERENCES

[1]. Chunxiong Lu, et al. N2S2 bromo-benzyl ether derivative, preparation method and application. CN111943876A.

Caution: Product has not been fully validated for medical applications. For research use only.

Tel: 609-228-6898

Fax: 609-228-5909

E-mail: tech@MedChemExpress.com

Address: 1 Deer Park Dr, Suite Q, Monmouth Junction, NJ 08852, USA