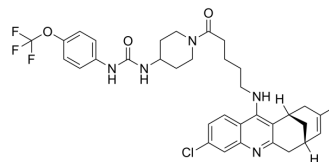


sEH/AChE-IN-3

Cat. No.:	HY-145833
CAS No.:	2490589-11-0
Molecular Formula:	C ₃₅ H ₃₉ ClF ₃ N ₅ O ₃
Molecular Weight:	670.16
Target:	Epoxide Hydrolase; Cholinesterase (ChE)
Pathway:	Metabolic Enzyme/Protease; Neuronal Signaling
Storage:	Please store the product under the recommended conditions in the Certificate of Analysis.



BIOLOGICAL ACTIVITY

Description	sEH/AChE-IN-3 (compound (-)-15) is a potent and BBB-penetrated dual inhibitor of sEH (soluble epoxide hydrolase) and AChE (acetylcholinesterase), with IC ₅₀ values of 0.4 nM (hsEH), 1.94 nM (hAChE), 615 (hBChE, human butyrylcholinesterase), 4.3 nM (msEH), and 2.61 nM (mAChE), respectively ^[1] .
IC₅₀ & Target	IC ₅₀ : 0.4 nM (hsEH), 1.94 ± 0.67 nM (hAChE), 615 ± 34 nM (hBChE), 4.3 nM (msEH), 2.61 ± 0.16 nM (mAChE) ^[1]

REFERENCES

[1]. Codony S, et al. Discovery and In Vivo Proof of Concept of a Highly Potent Dual Inhibitor of Soluble Epoxide Hydrolase and Acetylcholinesterase for the Treatment of Alzheimer's Disease. *J Med Chem.* 2022 Mar 24;65(6):4909-4925.

Caution: Product has not been fully validated for medical applications. For research use only.

Tel: 609-228-6898

Fax: 609-228-5909

E-mail: tech@MedChemExpress.com

Address: 1 Deer Park Dr, Suite Q, Monmouth Junction, NJ 08852, USA