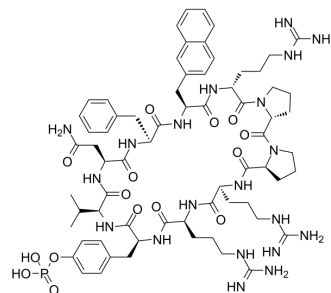


## Grb2 SH2 domain inhibitor 1

Cat. No.:	HY-146127
Molecular Formula:	C <sub>68</sub> H <sub>95</sub> N <sub>20</sub> O <sub>15</sub> P
Molecular Weight:	1463.58
Target:	Others
Pathway:	Others
Storage:	Please store the product under the recommended conditions in the Certificate of Analysis.



### BIOLOGICAL ACTIVITY

#### Description

Hy-146127 is a conformationally restricted cyclic cell penetrating peptide (CPP) containing d-pro-l-pro motif ring (AF Φ Rpprrfq) (where Φ It is L-naphthylalanine, R is D-arginine, P is D-proline), which is mainly used as a cyclic peptide inhibitor.

### REFERENCES

[1]. Wen J, et al. Rational design of cell-permeable cyclic peptides containing a d-Pro-l-Pro motif. *Bioorg Med Chem.* 2020 Oct 15;28(20):115711.

**Caution: Product has not been fully validated for medical applications. For research use only.**

Tel: 609-228-6898

Fax: 609-228-5909

E-mail: [tech@MedChemExpress.com](mailto:tech@MedChemExpress.com)

Address: 1 Deer Park Dr, Suite Q, Monmouth Junction, NJ 08852, USA