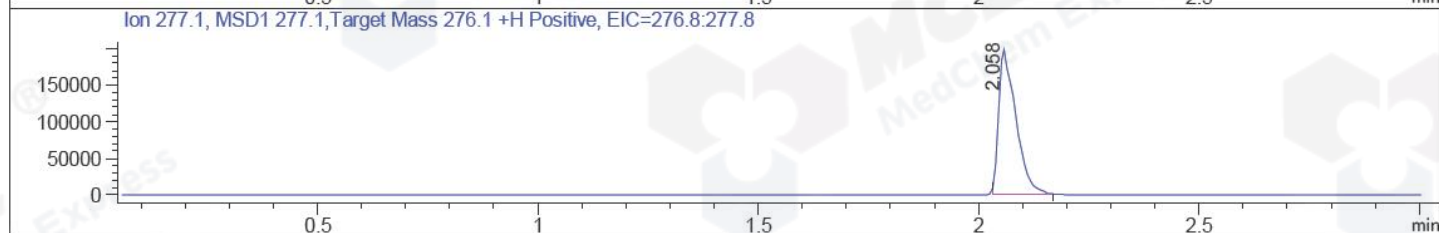
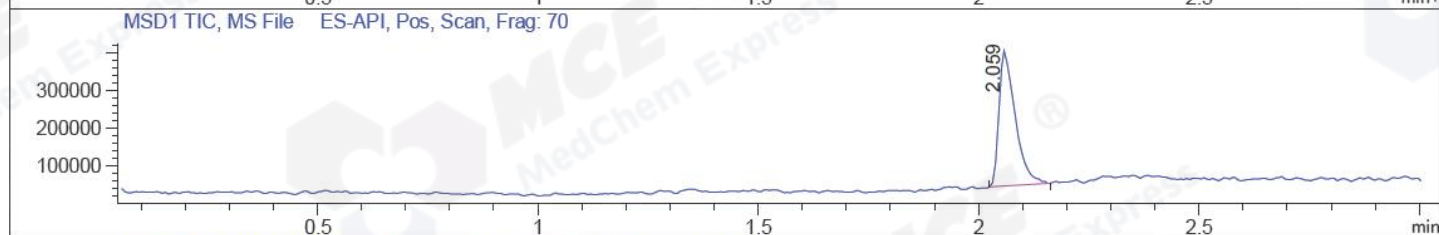
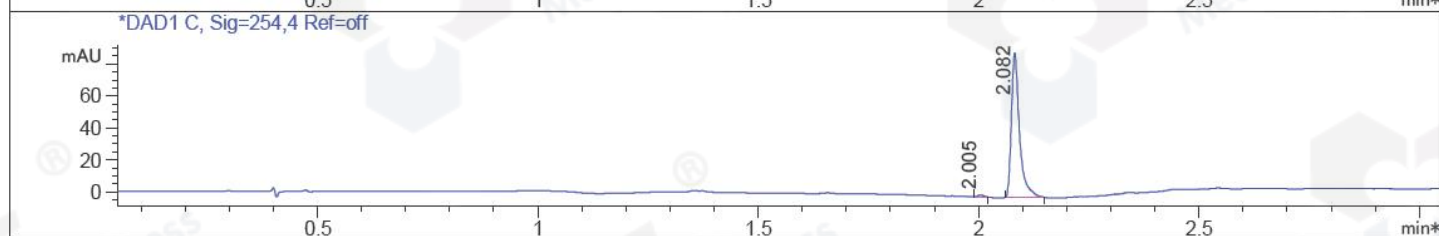
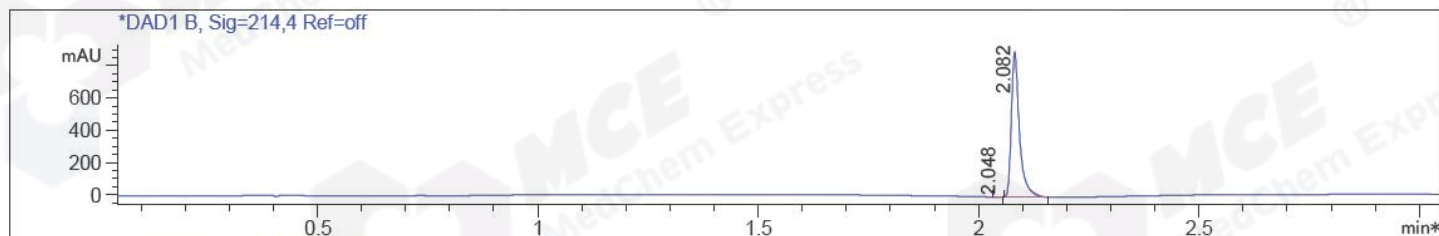


File D:\CHEM32\1\DATA\BIZ\BIZ2017-112-WJ1.D Tgt Mass (EZX): 276.10  
Injection Date : 12 Jan 17 10:05 am +0800 Seq. Line : 0  
Sample Name : BIZ2017-112-WJ1 Location : P1-B-09  
Acq. Operator : GZZ\_718 Inj : 1  
Spec. Reported : MS Integration Inj Volume : 1 ul  
Acq. Method : D:\Chem32\1\METHODS\1-POS-3MIN.M  
Analysis Method : D:\CHEM32\1\METHODS\1-POS-3MIN-PROSRSS.M  
Catalog No : HY-14616 Batch#23259 Easy-Access Method: '1-POS-3MIN' 276.10  
Method Info : Mobile Phase: A: water(0.01%TFA) B:ACN(0.01%TFA)  
Gradient: 5% to 95%B within 1.3 min  
Flow Rate :1.8ml/min  
Column :SunFire C18, 4.6\*50mm,3.5um A-RP-186  
Oven Temperature : 45C



Integration Results for DAD1 B, Sig=214,4 Ref=off

RetTim	Width	Area	Height	Area%	MS (+)
2.05	0.02	1.86	1.62	0.16	277
2.08	0.02	1149.62	900.17	99.84	277

Integration Results for DAD1 C, Sig=254,4 Ref=off

RetTim	Width	Area	Height	Area%	MS (+)
2.00	0.02	1.55	1.49	1.32	130
2.08	0.02	116.01	90.82	98.68	277

Ret. Time: 2.06

<<<< POSITIVE SPECTRA >>>>

