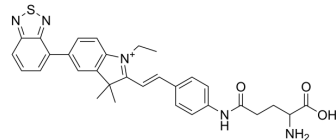


BMI-Glu

Cat. No.:	HY-146343
Molecular Formula:	C ₃₁ H ₃₂ N ₅ O ₃ S ⁺
Molecular Weight:	554.68
Target:	Fluorescent Dye
Pathway:	Others
Storage:	Please store the product under the recommended conditions in the Certificate of Analysis.



BIOLOGICAL ACTIVITY

Description	BMI-Glu is a selective γ -glutamyl transpeptidase (GGT) fluorescent probe with a K_m of 69.63 μ M. BMI-Glu has high sensitivity, good water solubility and biocompatibility ^[1] .
IC ₅₀ & Target	K_m : 69.63 μ M (GGT) ^[1]

REFERENCES

[1]. Guo S, et al. A water-soluble fluorescent probe for real-time visualization of γ -glutamyl transpeptidase activity in living cells. *Bioorg Med Chem Lett*. 2022 Jul 15;68:128762.

Caution: Product has not been fully validated for medical applications. For research use only.

Tel: 609-228-6898

Fax: 609-228-5909

E-mail: tech@MedChemExpress.com

Address: 1 Deer Park Dr, Suite Q, Monmouth Junction, NJ 08852, USA