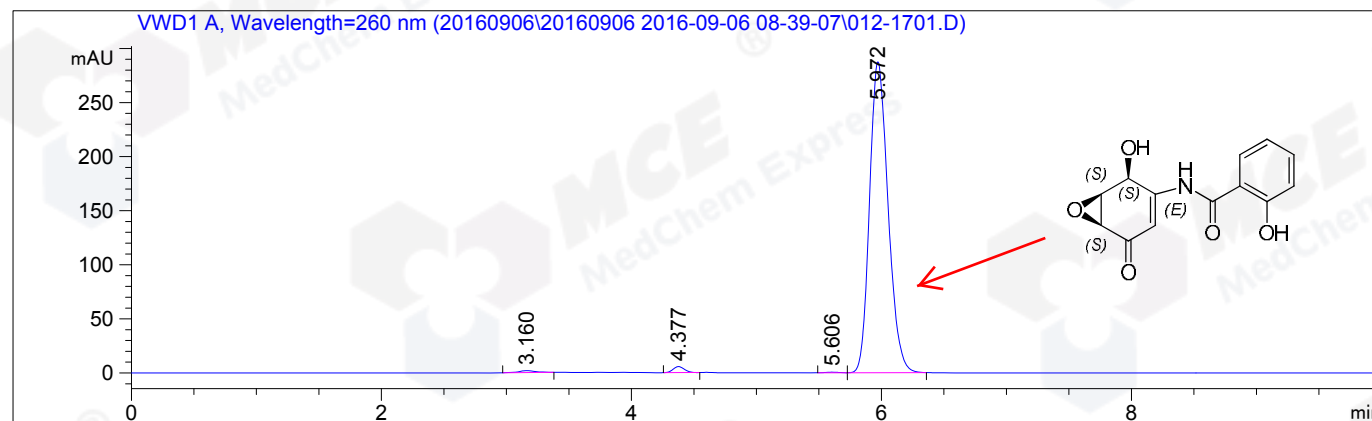


=====  
Acq. Operator : SW(HPLC-10) Seq. Line : 17  
Acq. Instrument : Instrument 1 Location : Vial 12  
Injection Date : 2016-09-06 11:15:29 Inj : 1  
Inj Volume : 5.000 µl  
Acq. Method : D:\CHEM\DATA\20160906\20160906 2016-09-06 08-39-07\HY\_14645-H01EE01,260NM,  
C2.M  
Last changed : 2016-09-06 11:14:14 by SW(HPLC-10)  
(modified after loading)  
Analysis Method : D:\CHEM\M\OD,90A-ETOH,210NM,C1.M  
Last changed : 2016-09-06 13:05:53 by SW(HPLC-10)  
(modified after loading)  
Catalog No : HY-14645 Batch#21608  
C-NP-27  
=====



=====  
Area Percent Report  
=====

Sorted By : Signal  
Multiplier: : 1.0000  
Dilution: : 1.0000  
Use Multiplier & Dilution Factor with ISTDs

Signal 1: VWD1 A, Wavelength=260 nm

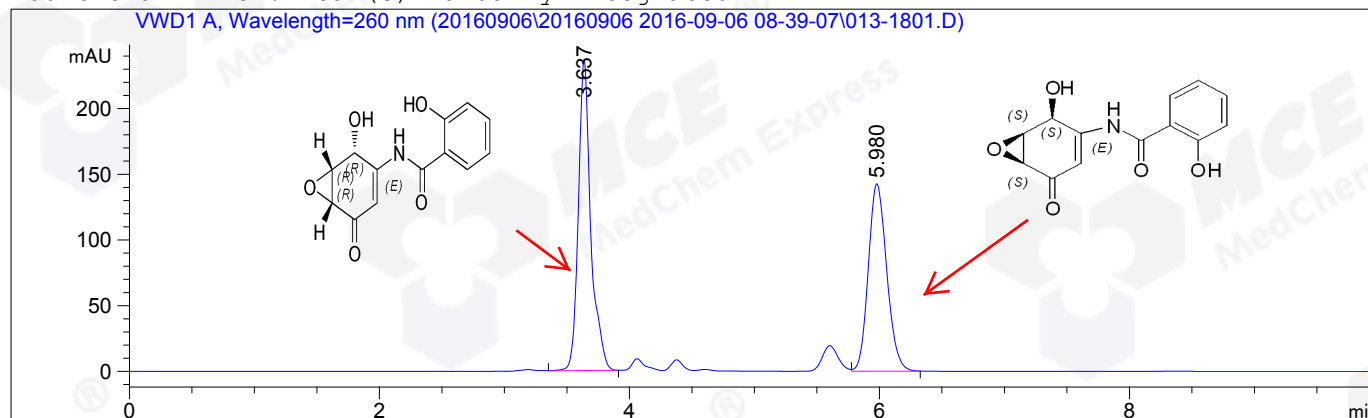
Peak #	RetTime [min]	Type	Width [min]	Area [mAU*s]	Height [mAU]	Area %
1	3.160	BB	0.1435	17.31504	1.81098	0.5745
2	4.377	BB	0.0978	34.96710	5.60074	1.1601
3	5.606	BV	0.1199	3.81332	5.17641e-1	0.1265
4	5.972	VB	0.1591	2957.98486	287.44449	98.1389

Totals : 3014.08032 295.37384

=====  
\*\*\* End of Report \*\*\*  
=====

=====  
Acq. Operator : SW(HPLC-10) Seq. Line : 18  
Acq. Instrument : Instrument 1 Location : Vial 13  
Injection Date : 2016-09-06 11:27:00 Inj : 1  
Inj Volume : 5.000 µl  
Acq. Method : D:\CHEM\DATA\20160906\20160906 2016-09-06 08-39-07\HY\_14645-H01EE01,260NM,  
C2.M  
Last changed : 2016-09-06 11:14:14 by SW(HPLC-10)  
(modified after loading)  
Analysis Method : D:\CHEM\M\OD,90A-ETOH,210NM,C1.M  
Last changed : 2016-09-06 13:05:53 by SW(HPLC-10)  
(modified after loading)  
Catalog No : HY-14645 Batch#21608  
C-NP-27  
=====

Additional Info : Peak(s) manually integrated



=====  
Area Percent Report  
=====

Sorted By : Signal  
Multiplier: : 1.0000  
Dilution: : 1.0000  
Use Multiplier & Dilution Factor with ISTDs

Signal 1: VWD1 A, Wavelength=260 nm

Peak #	RetTime [min]	Type	Width [min]	Area [mAU*s]	Height [mAU]	Area %
1	3.637	VB	0.1031	1640.32837	236.11136	52.9154
2	5.980	VB	0.1584	1459.58105	142.57306	47.0846

Totals : 3099.90942 378.68442

=====  
\*\*\* End of Report \*\*\*  
=====