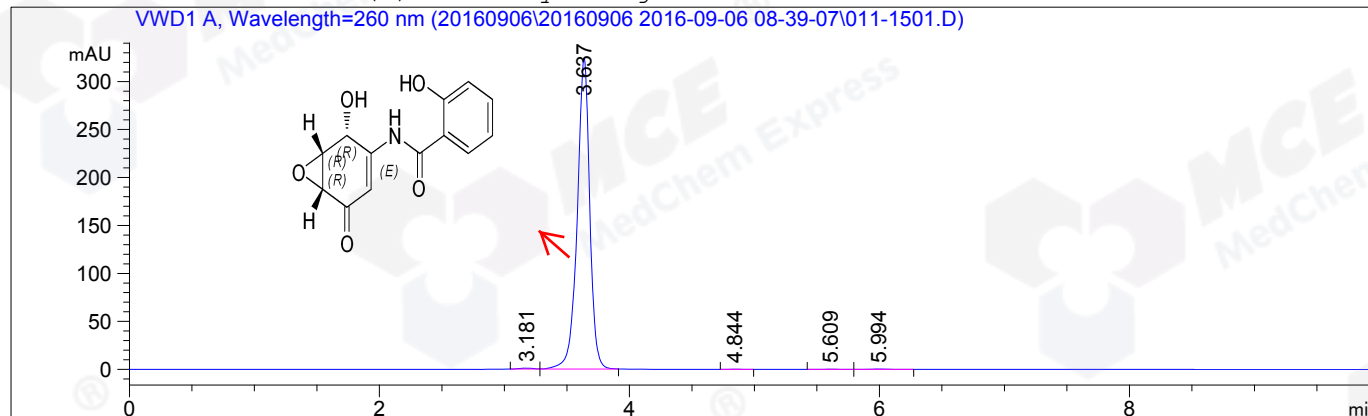


=====
Acq. Operator : SW(HPLC-10) Seq. Line : 15
Acq. Instrument : Instrument 1 Location : Vial 11
Injection Date : 2016-09-06 11:02:50 Inj : 1
Inj Volume : 5.000 µl
Acq. Method : D:\CHEM\DATA\20160906\20160906 2016-09-06 08-39-07\HY_14645-H01EE01,260NM,
C2.M
Last changed : 2016-09-06 11:01:38 by SW(HPLC-10)
(modified after loading)
Analysis Method : D:\CHEM\M\OD,90A-ETOH,210NM,C1.M
Last changed : 2016-09-06 13:05:53 by SW(HPLC-10)
(modified after loading)
Catalog No : HY-14645A Batch#21609
C-NP-27
=====

Additional Info : Peak(s) manually integrated



=====
Area Percent Report
=====

Sorted By : Signal
Multiplier: : 1.0000
Dilution: : 1.0000
Use Multiplier & Dilution Factor with ISTDs

Signal 1: VWD1 A, Wavelength=260 nm

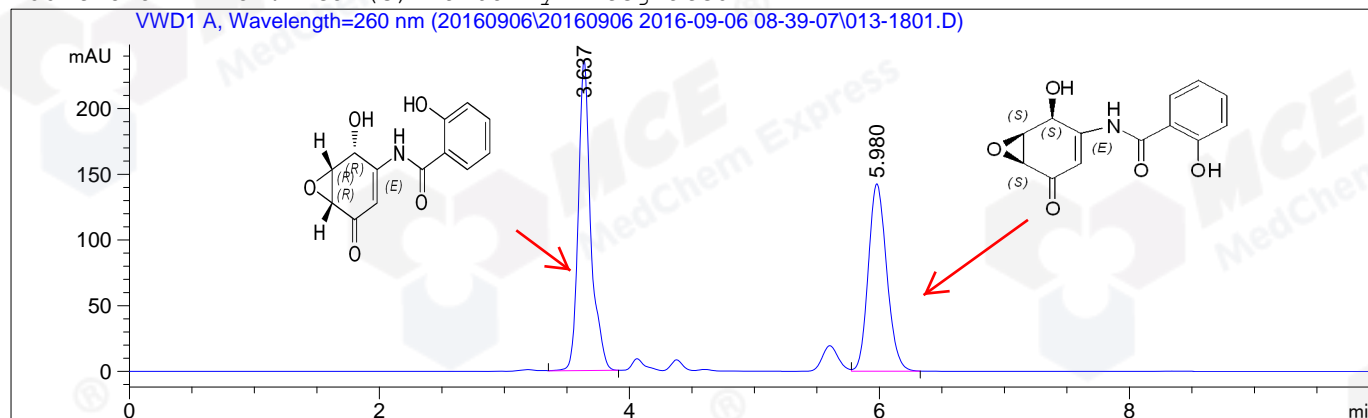
Peak #	RetTime [min]	Type	Width [min]	Area [mAU*s]	Height [mAU]	Area %
1	3.181	BV	0.1275	6.94236	8.84962e-1	0.3057
2	3.637	VB	0.1043	2257.99927	323.85681	99.4188
3	4.844	MM	0.1185	1.02681	1.44468e-1	0.0452
4	5.609	MF	0.1647	1.70028	1.72054e-1	0.0749
5	5.994	FM	0.1712	3.53131	3.43853e-1	0.1555

Totals : 2271.20004 325.40215

=====
*** End of Report ***
=====

=====
Acq. Operator : SW(HPLC-10) Seq. Line : 18
Acq. Instrument : Instrument 1 Location : Vial 13
Injection Date : 2016-09-06 11:27:00 Inj : 1
Inj Volume : 5.000 µl
Acq. Method : D:\CHEM\DATA\20160906\20160906 2016-09-06 08-39-07\HY_14645-H01EE01,260NM,
C2.M
Last changed : 2016-09-06 11:14:14 by SW(HPLC-10)
(modified after loading)
Analysis Method : D:\CHEM\OD,90A-ETOH,210NM,C1.M
Last changed : 2016-09-06 13:05:53 by SW(HPLC-10)
(modified after loading)
Catalog No : HY-14645A Batch#21609
C-NP-27
=====

Additional Info : Peak(s) manually integrated



=====
Area Percent Report
=====

Sorted By : Signal
Multiplier: : 1.0000
Dilution: : 1.0000
Use Multiplier & Dilution Factor with ISTDs

Signal 1: VWD1 A, Wavelength=260 nm

Peak #	RetTime [min]	Type	Width [min]	Area [mAU*s]	Height [mAU]	Area %
1	3.637	VB	0.1031	1640.32837	236.11136	52.9154
2	5.980	VB	0.1584	1459.58105	142.57306	47.0846

Totals : 3099.90942 378.68442

=====
*** End of Report ***
=====