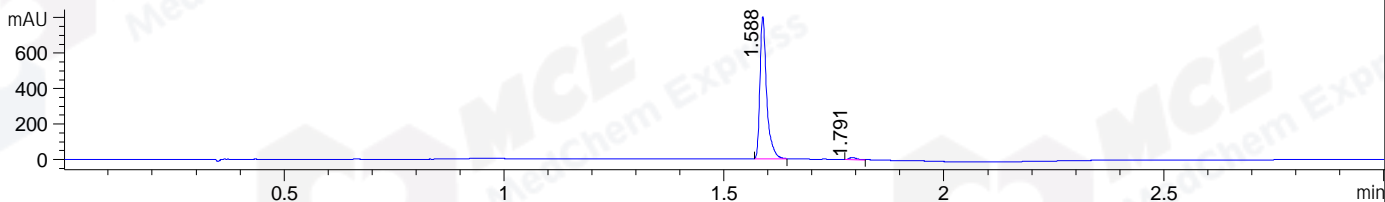
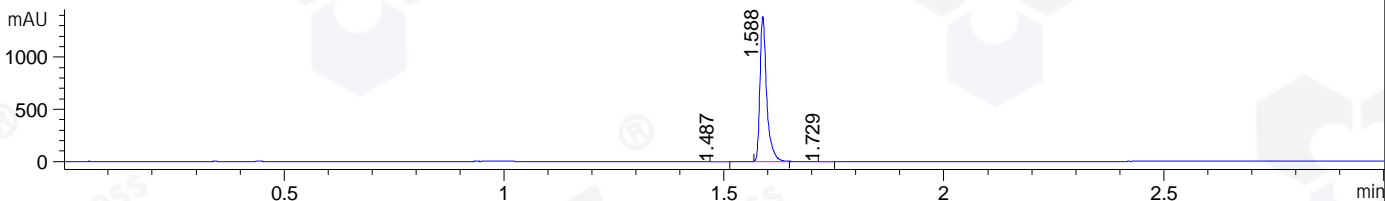


File ..\DATA\2019\20190625\612\CPK2019-624-22017.D Tgt Mass (CHM):
Injection Date : 25 Jun 19 11:57 am +0800 Seq. Line : 39
Sample Name : CPK2019-624-22017 Location : P1-D-01
Acq. Operator : ZJ_1432 Inj : 1
Spec. Reported : MS Integration Inj Volume : 1 ul
Acq. Method : D:\Chem32\1\data\2019\20190625\612\1-POS-3MIN.M
Analysis Method : D:\CHEM32\1\DATA\2019\20190625\612\1-POS-3MIN.M
Catalog No : HY-14648 Batch#22017
Method Info : Mobile Phase: A: water(0.01%TFA) B:ACN(0.01%TFA)
Gradient: 5% to 95%B within 1.3 min
Flow Rate :1.8ml/min
Column :SunFire C18, 4.6*50mm,3.5um A-RP-433
Oven Temperature : 45□

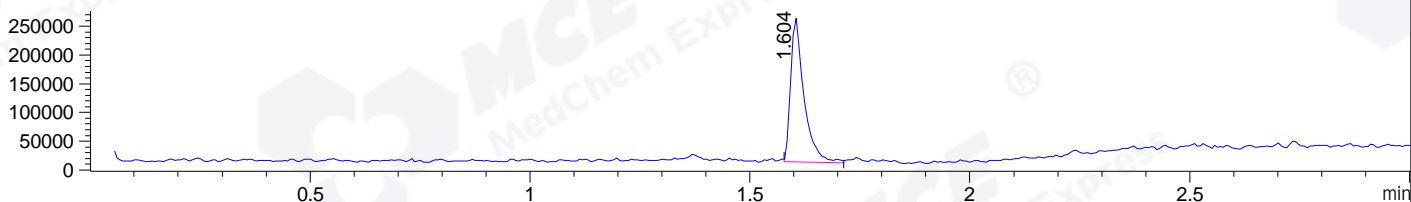
DAD1 B, Sig=214,4 Ref=off



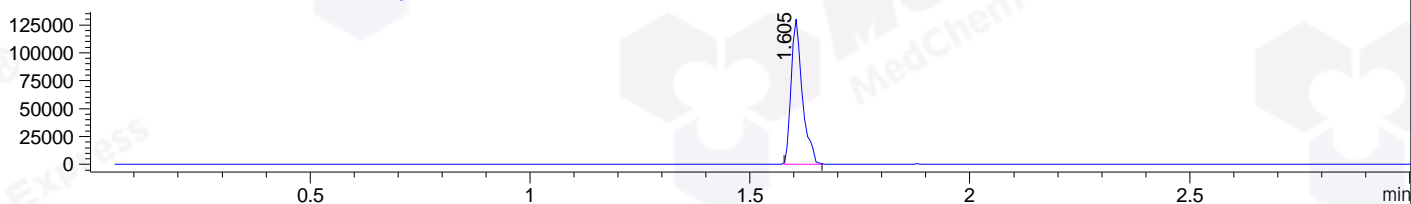
DAD1 C, Sig=254,4 Ref=off



MSD1 TIC, MS File ES-API, Pos, Scan, Frag: 70



Ion 393.4718, MSD1 393.4718, Target Mass 392.4718 +H Positive, EIC=393.17:394.17



Integration Results for DAD1 B, Sig=214,4 Ref=off

RetTim	Width	Area	Height	Area%	MS (+)
1.59	0.02	847.49	802.63	98.32	393
1.79	0.02	14.49	12.58	1.68	232

Integration Results for DAD1 C, Sig=254,4 Ref=off

RetTim	Width	Area	Height	Area%	MS (+)
1.49	0.02	1.04	1.03	0.07	232
1.59	0.02	1473.36	1391.03	99.86	393
1.73	0.02	1.05	1.04	0.07	232

Integration Results for MSD1 TIC, MS File

RetTim	Width	Area	Height	Area%	MS (+)
1.60	0.03	526786.38	249996.02	100.00	393

Ret. Time: 1.60

<<<< POSITIVE SPECTRA >>>>

ES-API Positive

