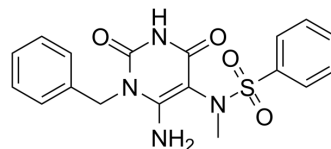


RmlA-IN-1

Cat. No.:	HY-146549
CAS No.:	1415030-78-2
Molecular Formula:	C ₁₈ H ₁₈ N ₄ O ₄ S
Molecular Weight:	386.42
Target:	Bacterial
Pathway:	Anti-infection
Storage:	Please store the product under the recommended conditions in the Certificate of Analysis.



BIOLOGICAL ACTIVITY

Description

RmlA-IN-1 (Compound 8a) is a potent inhibitor of glucose-1-phosphate thymidyltransferase (RmlA) with an IC₅₀ of 0.073 μM. RmlA-IN-1 influences monosaccharide l-Rhamnose biosynthetic pathway. RmlA-IN-1 affects bacterial cell wall permeability^[1].

REFERENCES

[1]. Xiao G, et al. Next generation Glucose-1-phosphate thymidyltransferase (RmlA) inhibitors: An extended SAR study to direct future design. *Bioorg Med Chem.* 2021;50:116477.

Caution: Product has not been fully validated for medical applications. For research use only.

Tel: 609-228-6898

Fax: 609-228-5909

E-mail: tech@MedChemExpress.com

Address: 1 Deer Park Dr, Suite Q, Monmouth Junction, NJ 08852, USA