

File ..\2018\20180806\20180806\CPK2018-806-14146.D Tgt Mass (CHM):

Injection Date : 6 Aug 18 4:17 pm +0800 Seq. Line : 88

Sample Name : CPK2018-806-14146 Location : P2-A-06

Acq. Operator : SYSTEM Inj : 1

Spec. Reported : MS Integration Inj Volume : 1 ul

Acq. Method : D:\LCMS03\Data\2018\20180806\20180806\1-POS-3MIN.M

Analysis Method : D:\LCMS03\Data\2018\20180806\20180806\1-POS-3MIN.M

Catalog No : HY-14655 Batch#14146

Method Info : Mobile Phase: A: water(0.01%TFA) B:ACN(0.01%TFA)

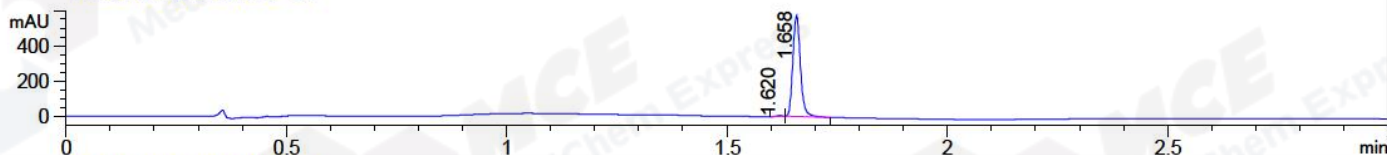
Gradient: 5% to 95%B within 1.3 min

Flow Rate :1.8ml/min

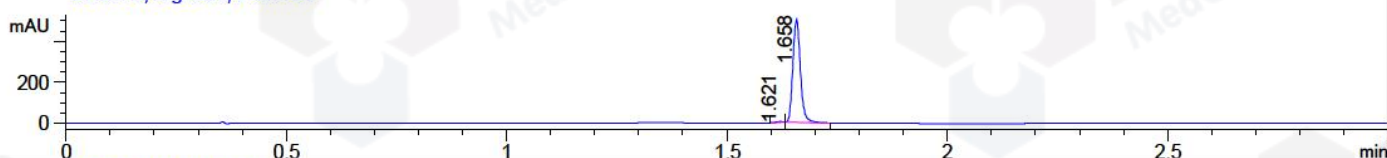
Column :SunFire C18, 4.6\*50mm,3.5um A-RP-186

Oven Temperature : 45C

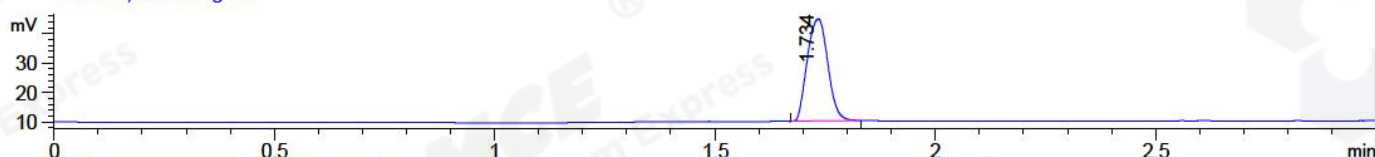
DAD1 A, Sig=214,4 Ref=off



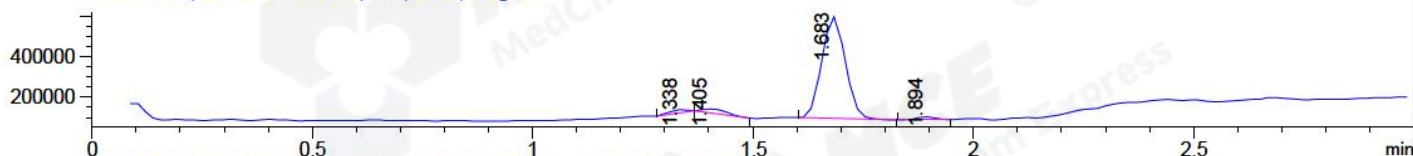
DAD1 B, Sig=254,4 Ref=off



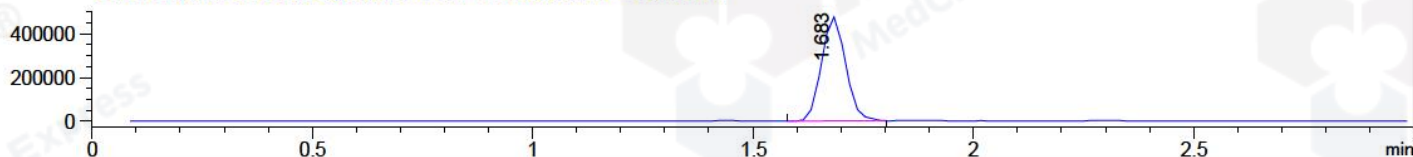
ELS1 A, ELSD Signal



MSD1 TIC, MS File ES-API, Pos, Scan, Frag: 70



Ion 399.4, MSD1 399.4, Target Mass 398.4 +H Positive, EIC=399.1:400.1



## Integration Results for DAD1 A, Sig=214,4 Ref=off

RetTim	Width	Area	Height	Area%	MS (+)
1.62	0.02	3.95	3.94	0.58	315
1.66	0.02	681.90	569.07	99.42	399

## Integration Results for DAD1 B, Sig=254,4 Ref=off

RetTim	Width	Area	Height	Area%	MS (+)
1.62	0.02	4.07	3.89	0.67	315
1.66	0.02	599.24	500.42	99.33	399

## Integration Results for ELS1 A, ELSD Signal

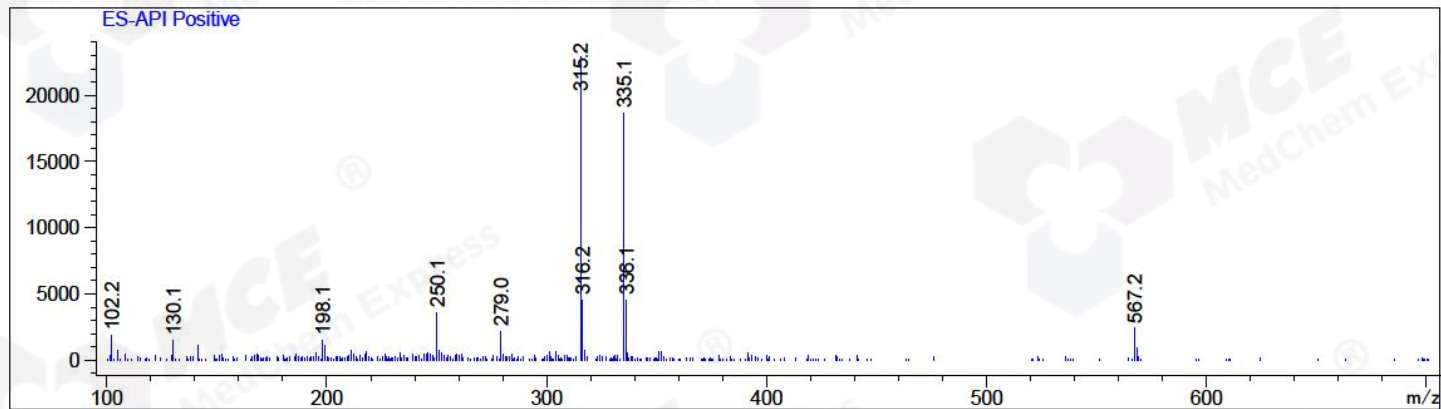
RetTim	Width	Area	Height	Area%	MS (+)
1.73	0.05	112.34	34.66	100.00	399

## Integration Results for MSD1 TIC, MS File

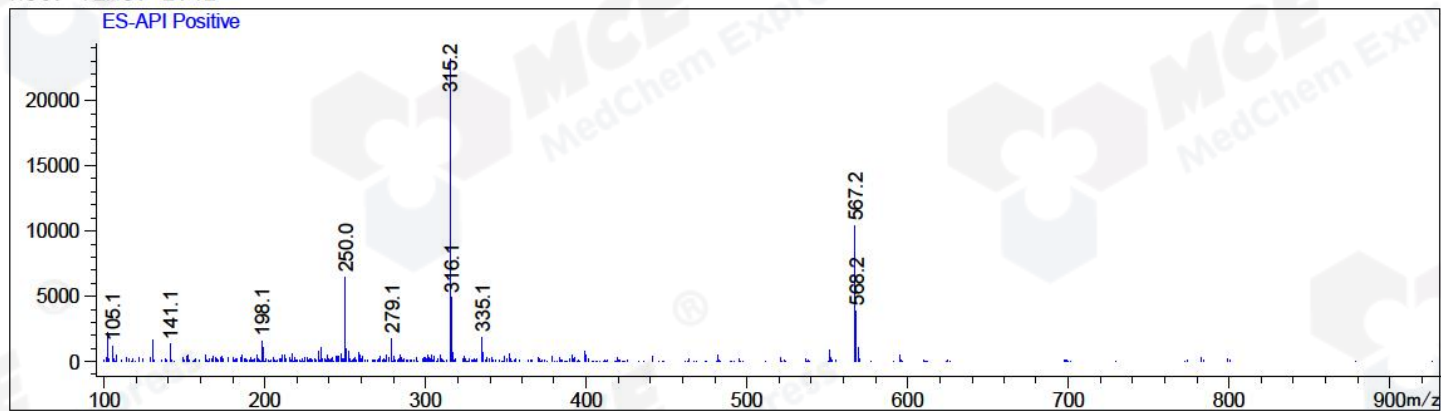
1.34	0.05	42638.65	13754.58	2.08	315
1.41	0.07	70652.14	18444.31	3.45	315
1.68	0.06	1890410.38	502705.72	92.27	399
1.89	0.05	45000.15	15155.90	2.20	315

RetTim	Width	Area	Height	Area%	MS(+)
--------	-------	------	--------	-------	-------

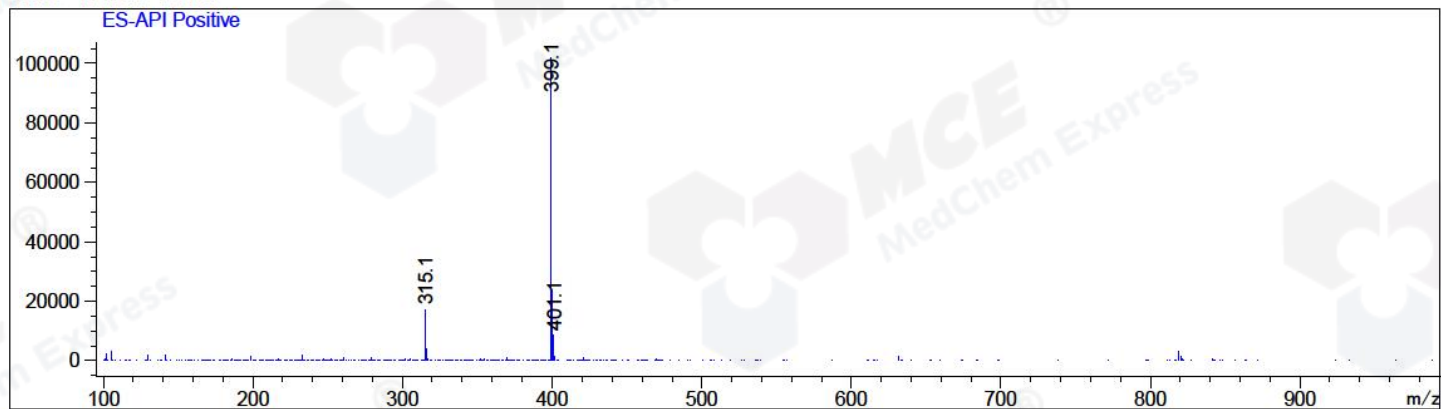
Ret. Time: 1.34 &lt;&lt;&lt;&lt; POSITIVE SPECTRA &gt;&gt;&gt;&gt;



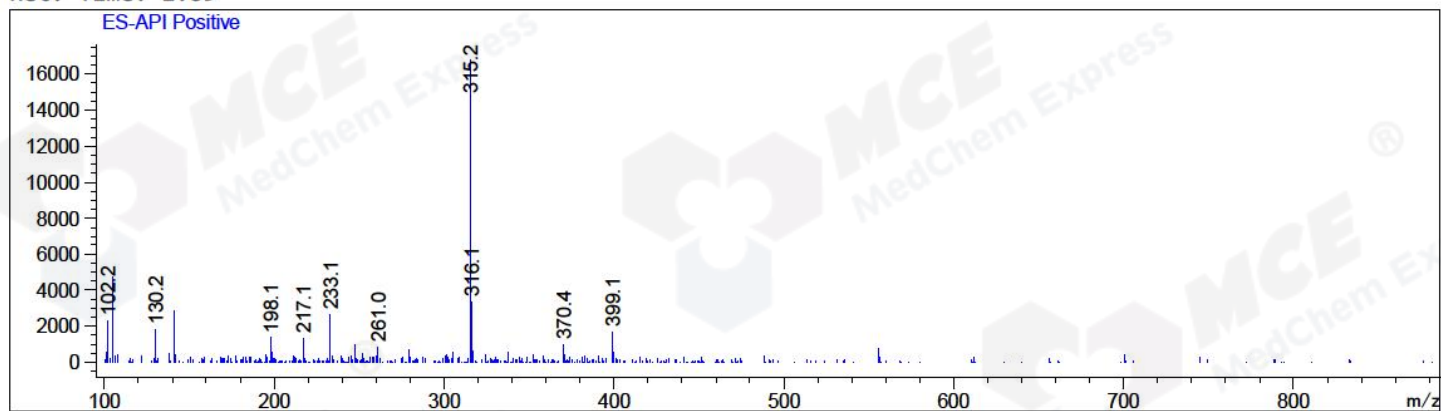
Ret. Time: 1.41



Ret. Time: 1.68



Ret. Time: 1.89



\*\*\* End of Report \*\*\*