

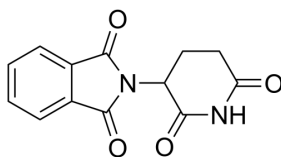
Thalidomide

Cat. No.:	HY-14658
CAS No.:	50-35-1
Batch No.:	366019
Chemical Name:	1H-Isoindole-1,3(2H)-dione, 2-(2,6-dioxo-3-piperidinyl)-

PHYSICAL AND CHEMICAL PROPERTIES

Molecular Formula:	C ₁₃ H ₁₀ N ₂ O ₄		
Molecular Weight:	258.23		
Storage:	Powder	-20°C	3 years
		4°C	2 years
	In solvent	-80°C	1 year
		-20°C	6 months

Chemical Structure:



ANALYTICAL DATA

Appearance:	White to off-white (Solid)
¹ H NMR Spectrum:	Consistent with structure
LCMS:	Consistent with structure
Purity (HPLC):	99.92%
Conclusion:	The product has been tested and complies with the given specifications.

Caution: Product has not been fully validated for medical applications. For research use only.

Tel: 609-228-6898

Fax: 609-228-5909

E-mail: tech@MedChemExpress.com

Address: 1 Deer Park Dr, Suite Q, Monmouth Junction, NJ 08852, USA